

Supplementary information

Figure S6. Mass chromatograms of non-derivatized peptides and amino acids in RPH (black line) and its exopeptidase digest (pink line) in total ion scan mode

Total ion scan was carried out at short scanning ranges of $m/z = 50-150, 150-200, 200-250, 250-300, 300-350, 350-400, 400-450, 450-500, 500-600, 600-700, 700-800,$ and $800-1000$, respectively.

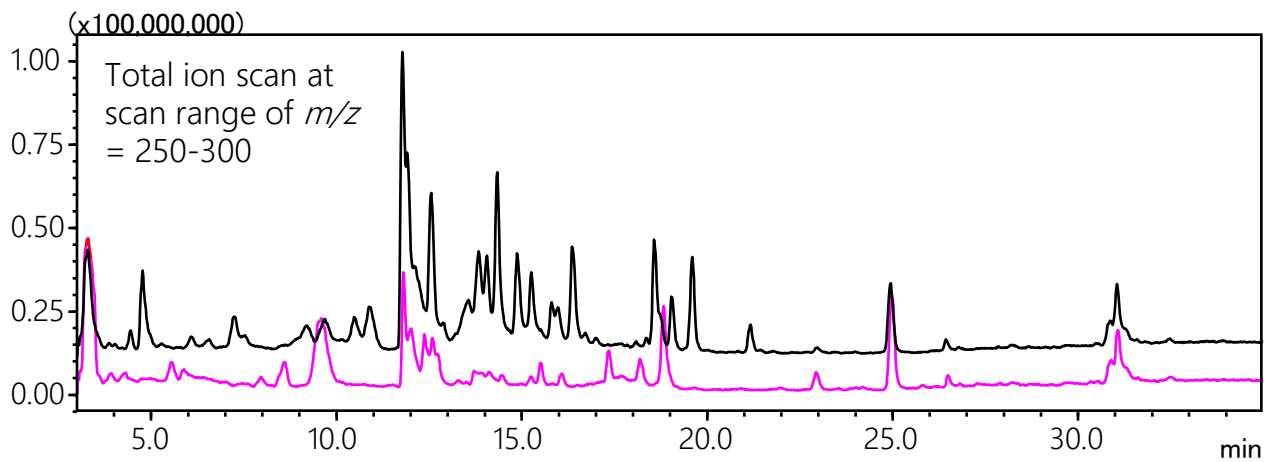
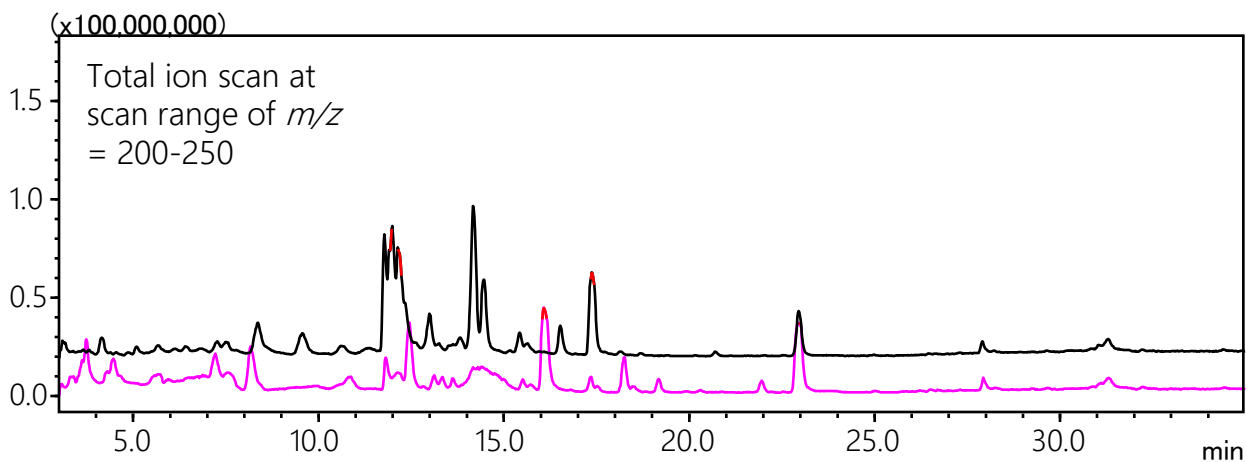
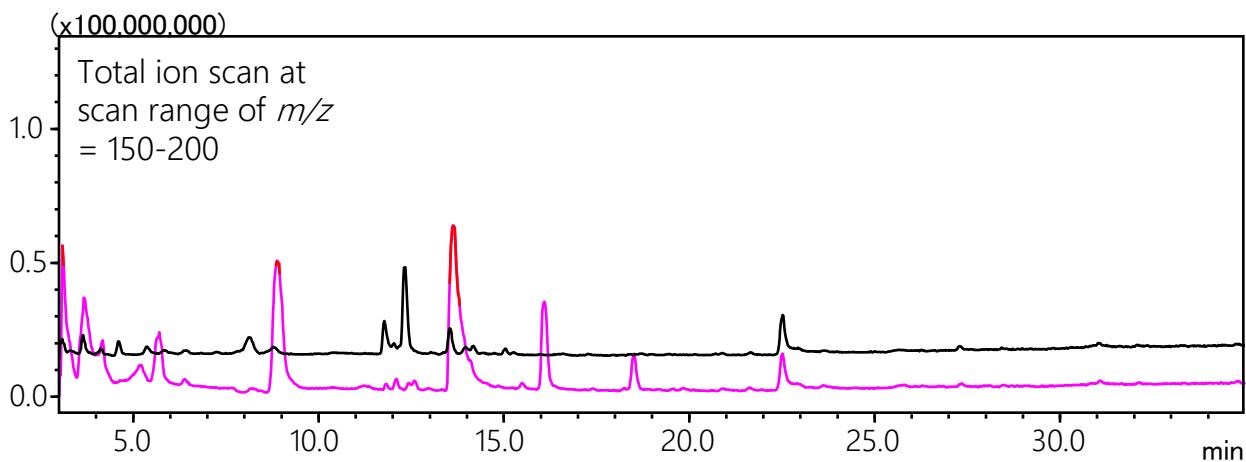
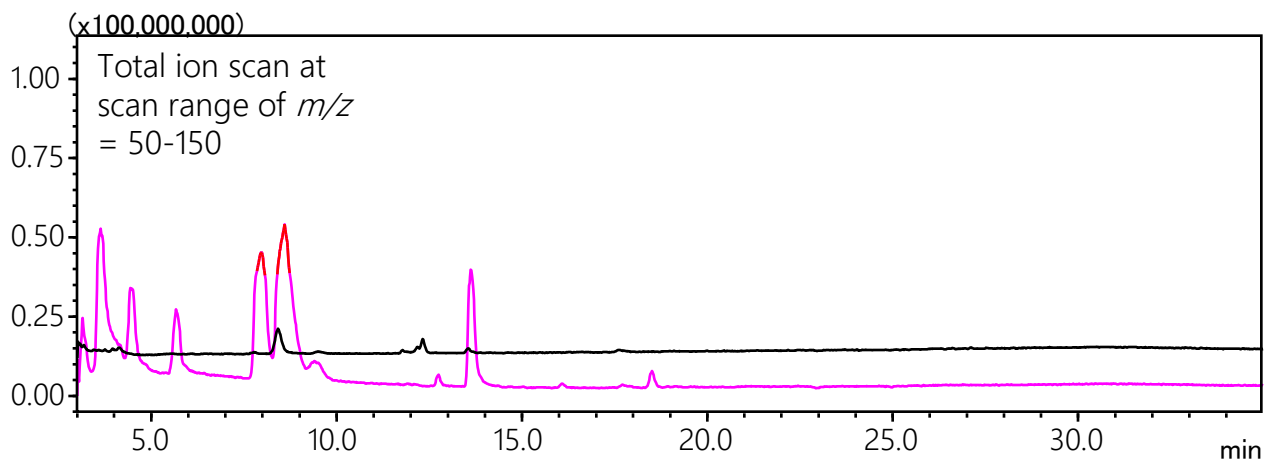


Figure S6.

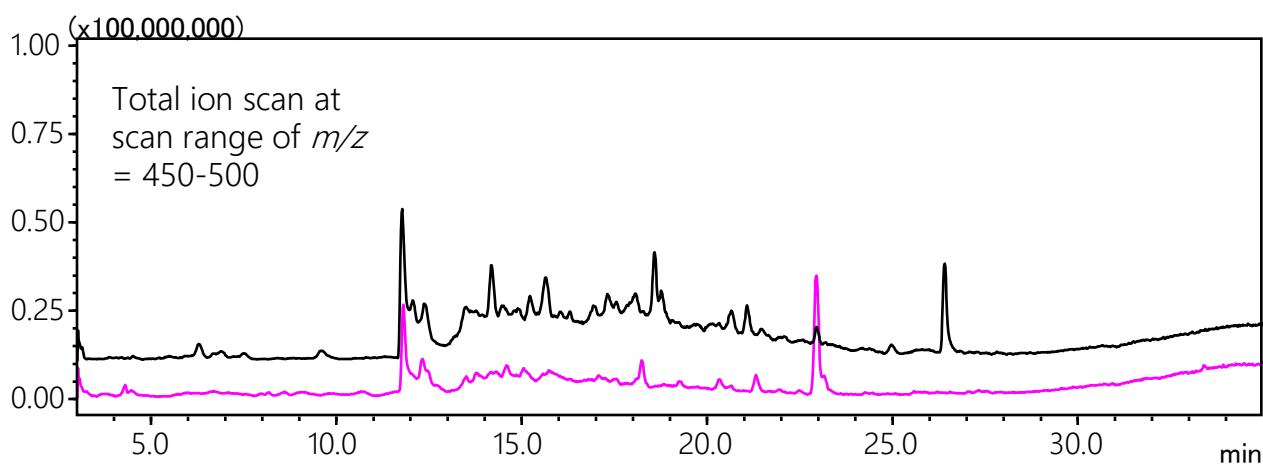
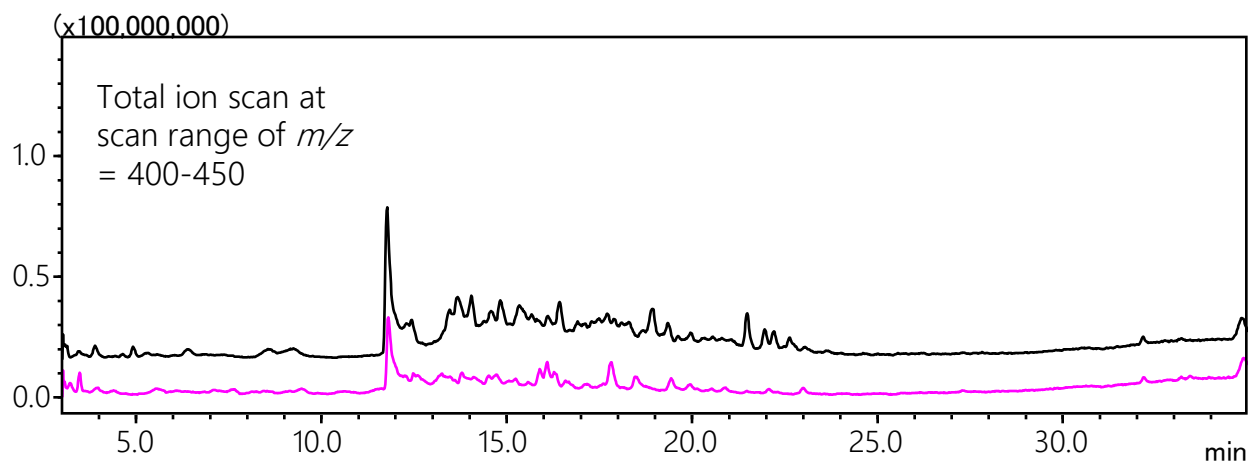
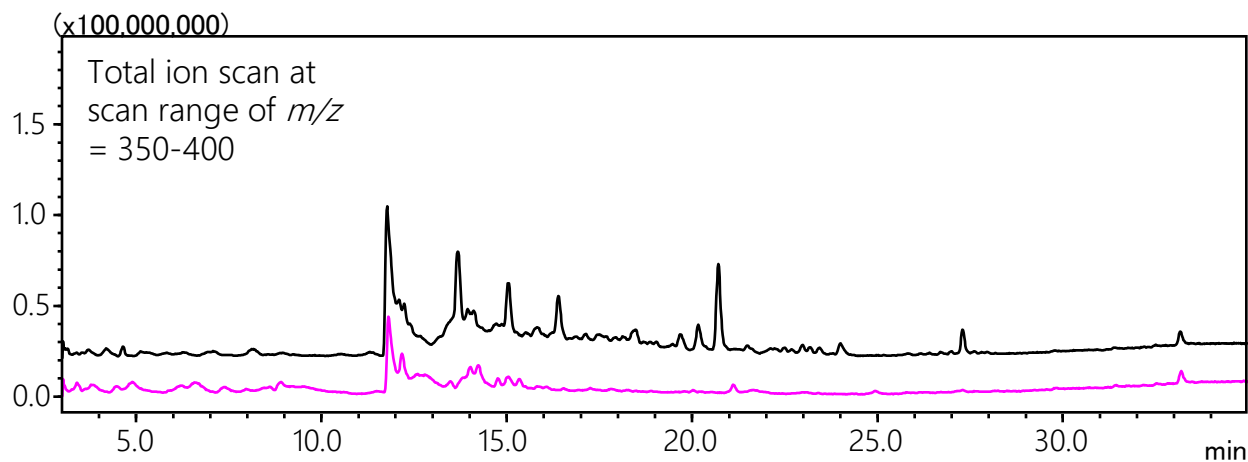
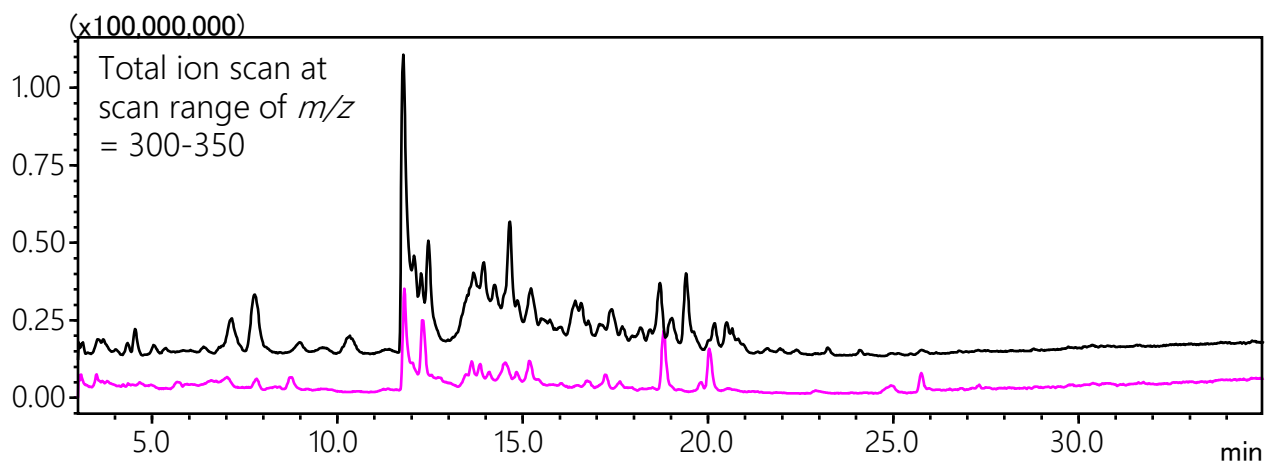


Figure S6.

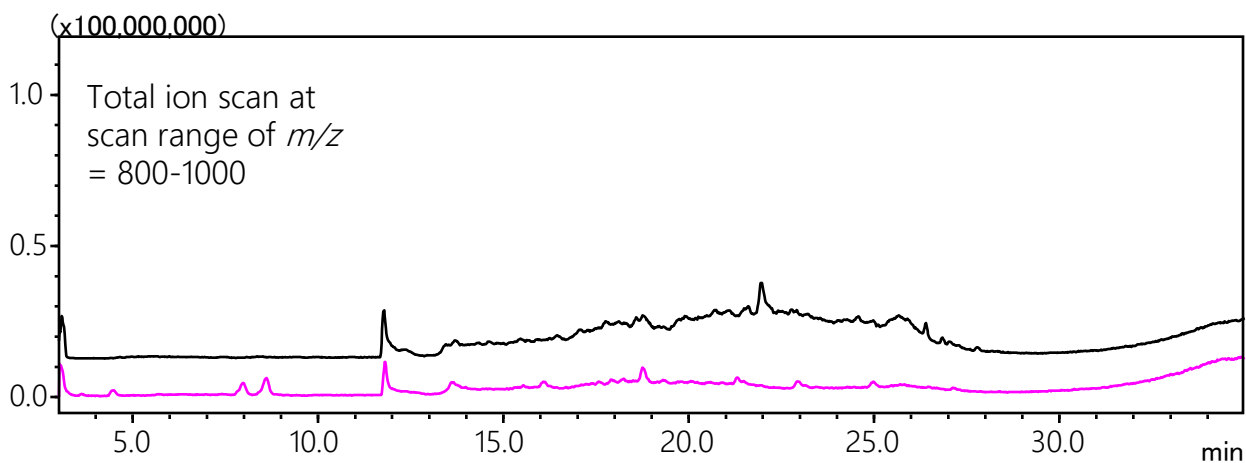
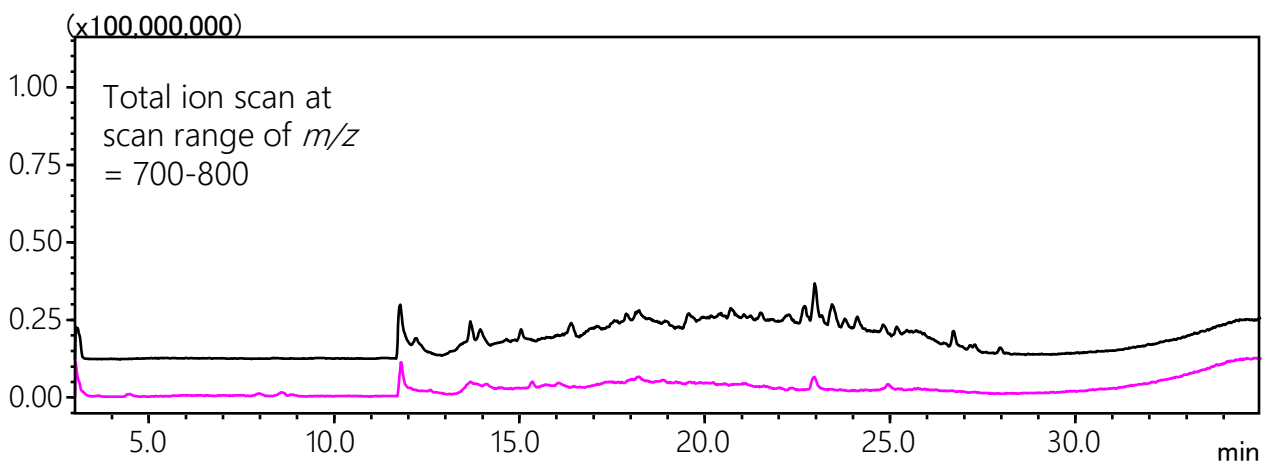
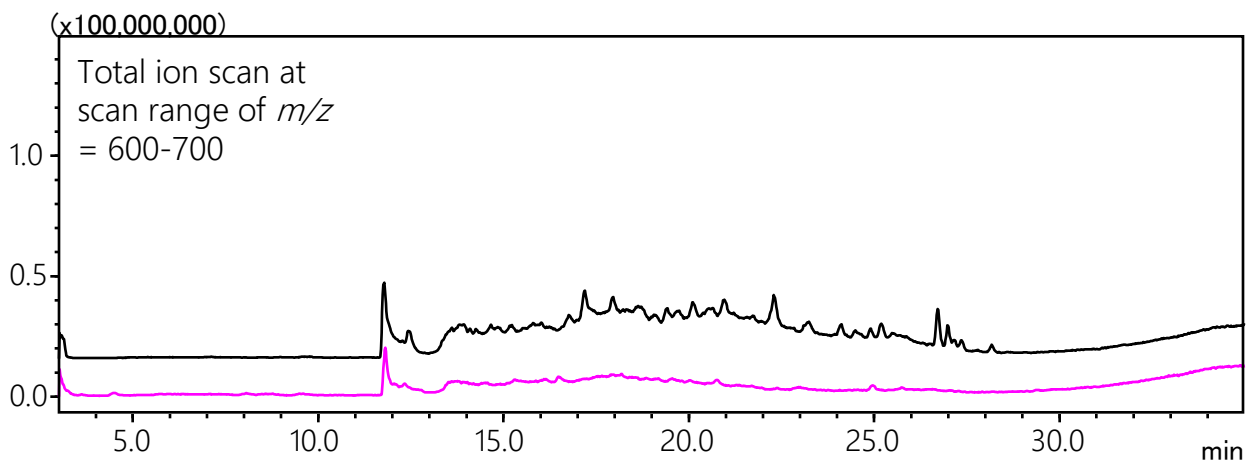
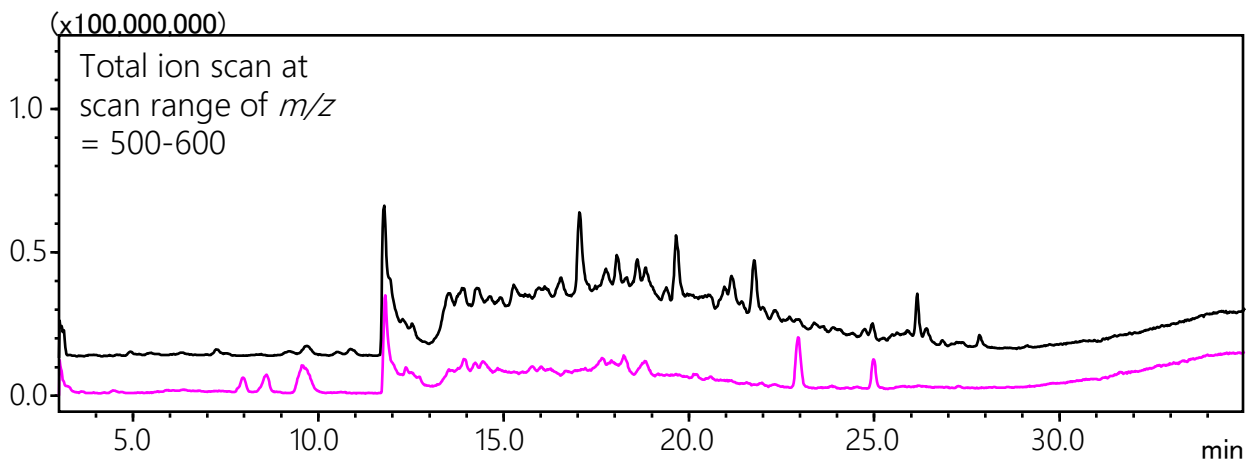


Figure S6.