

Supplementary information

Figure S3. Mass chromatograms of AccQ-derivatives of SEC fractions of the exopeptidase digest of RPH by precursor ion scan mode

Peaks marked with uppercase represent amino acids. Peaks marked with number represent AccQ-peptides and AccQ-amino acid derivatives. Number on peak corresponds with Table 2.

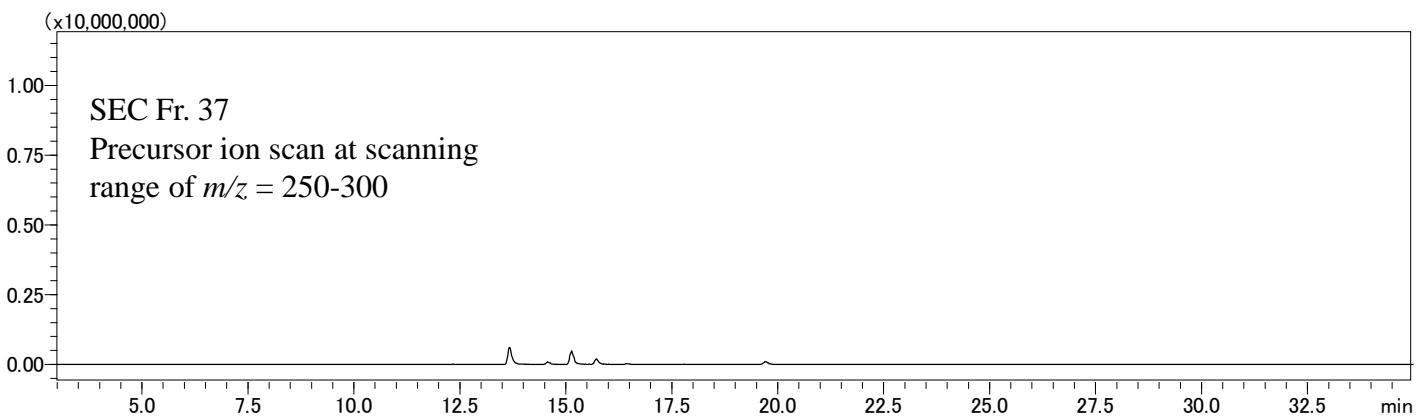
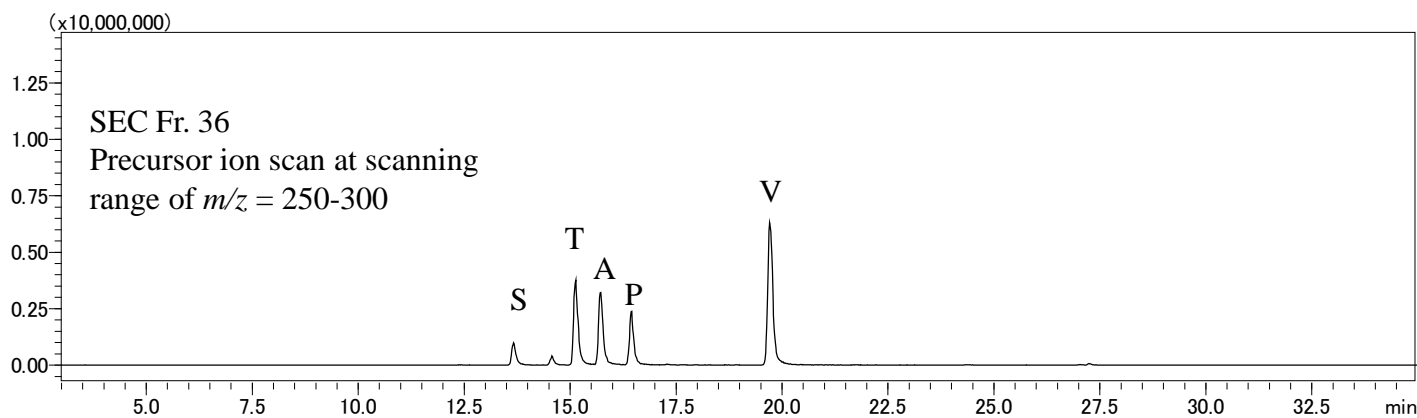
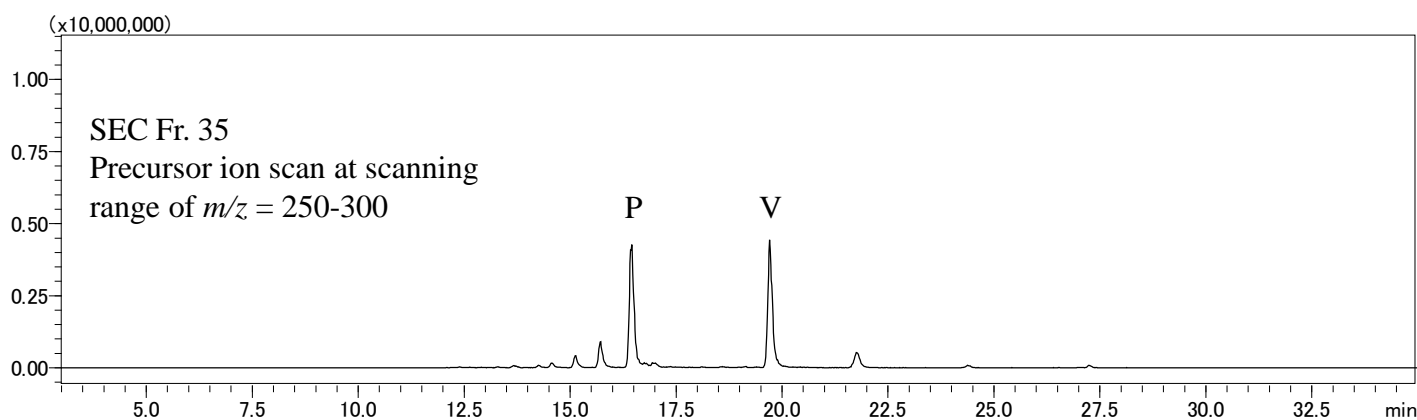
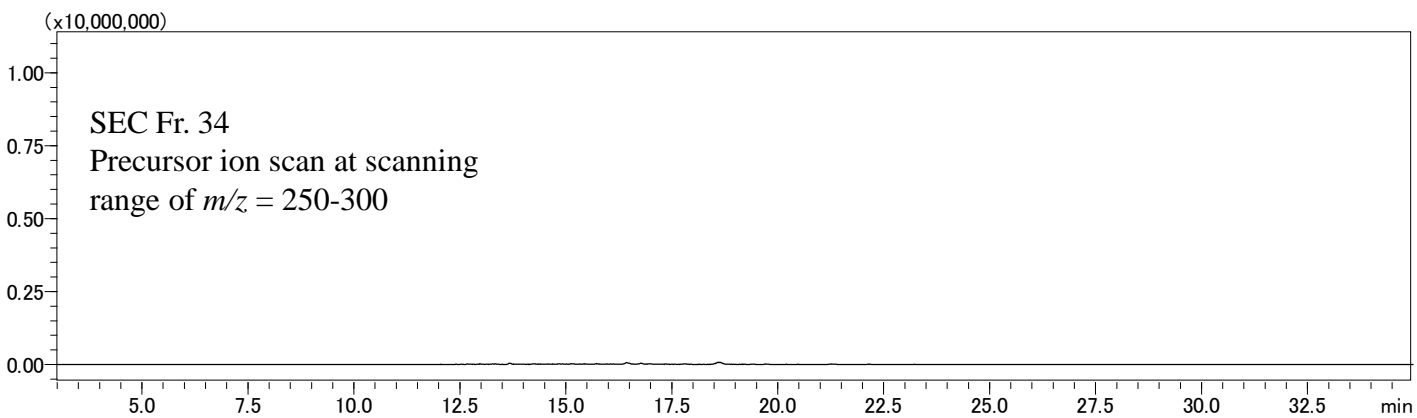


Figure S3.

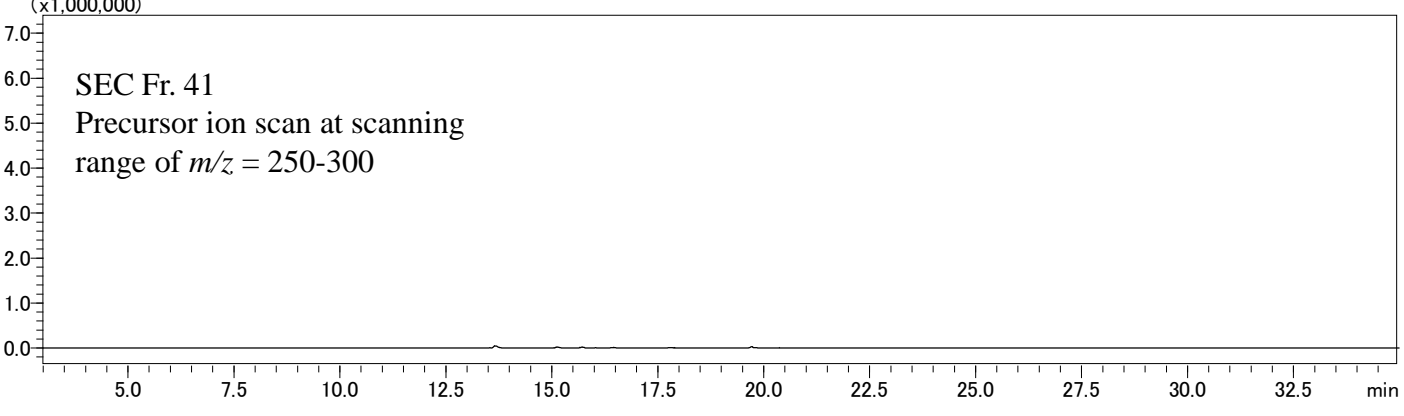
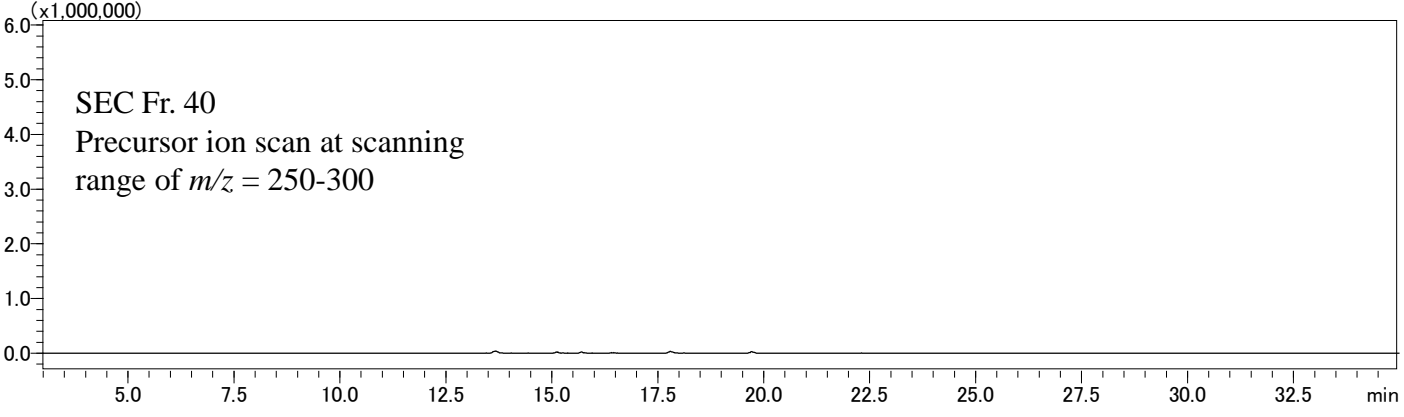
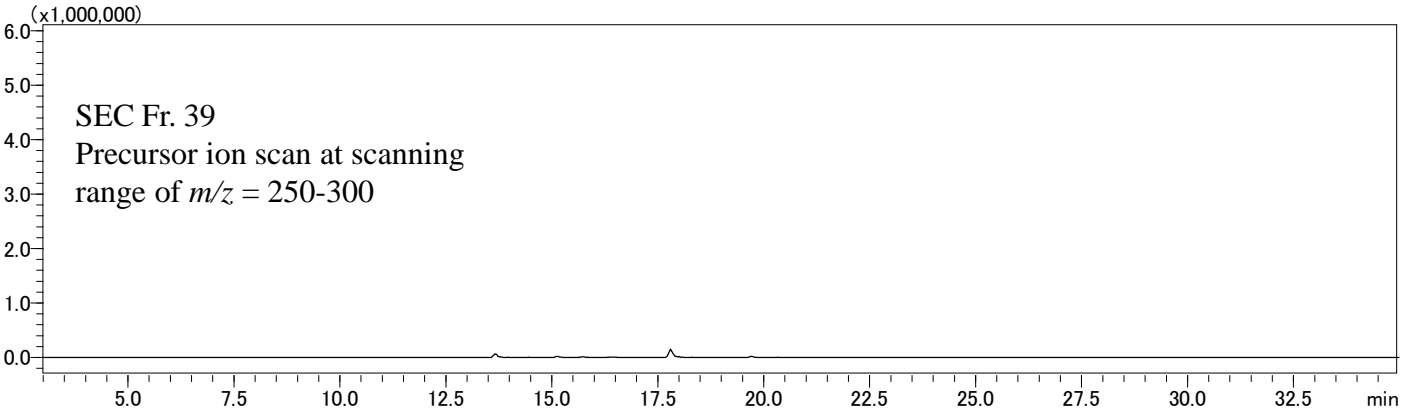
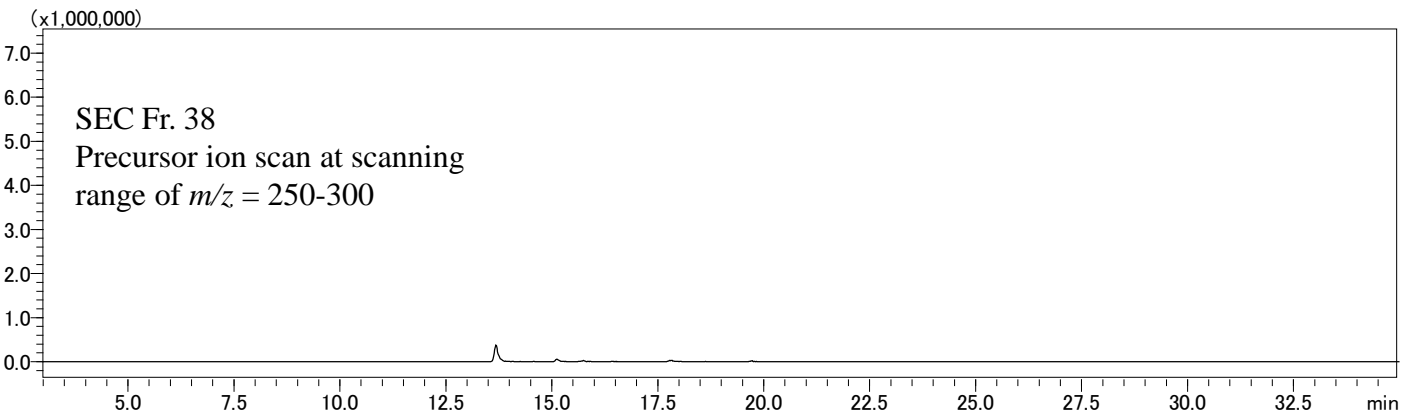


Figure S3.

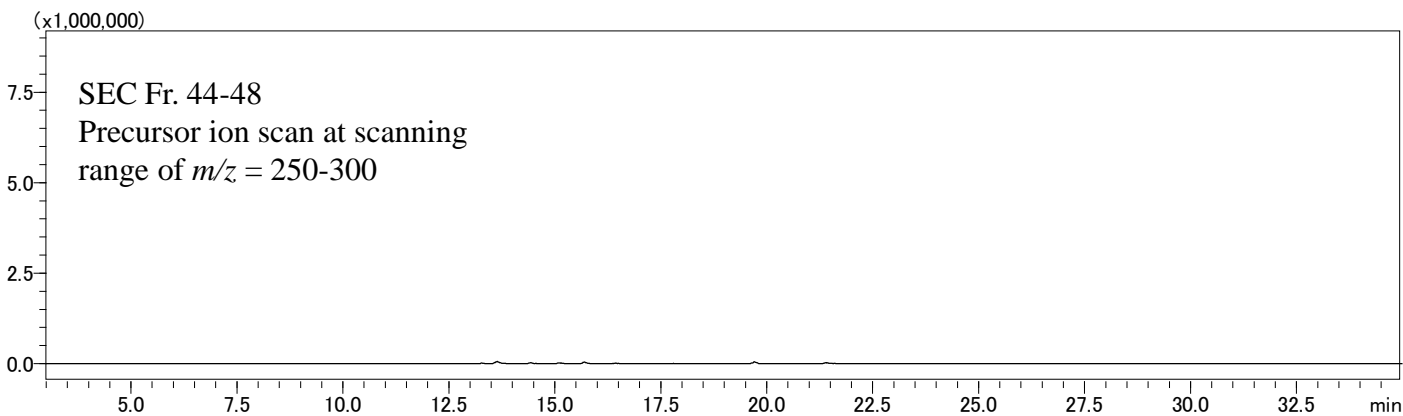
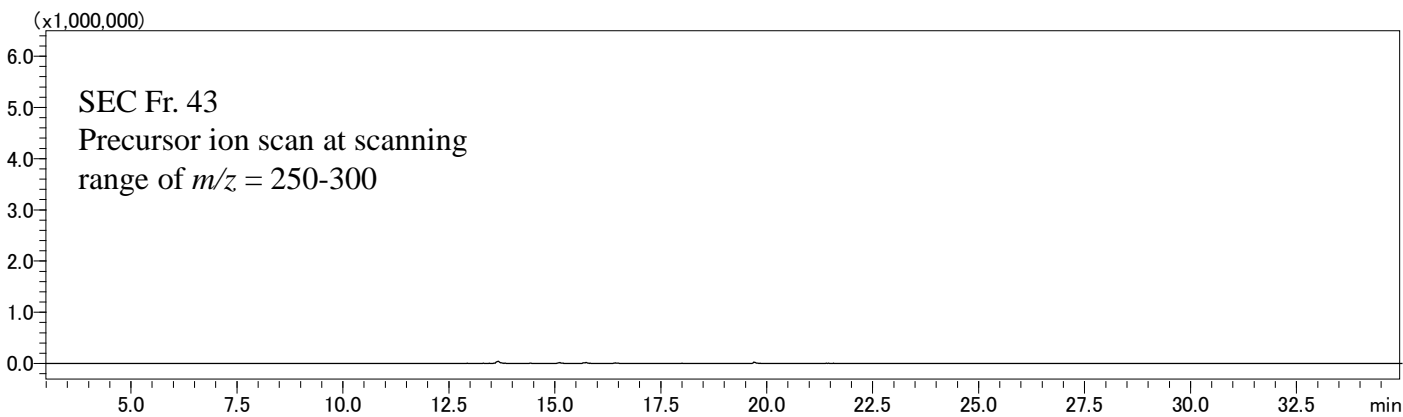
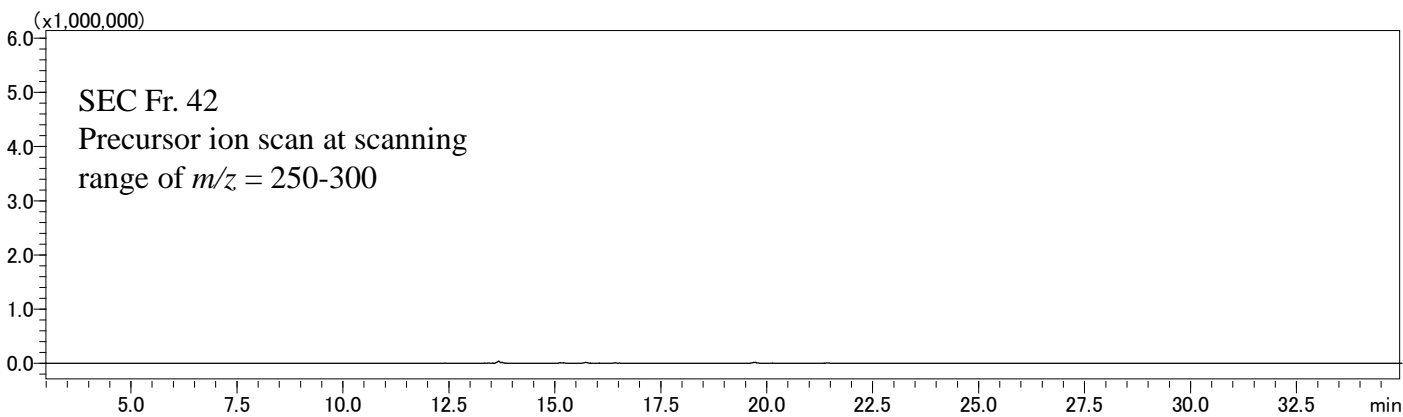


Figure S3.

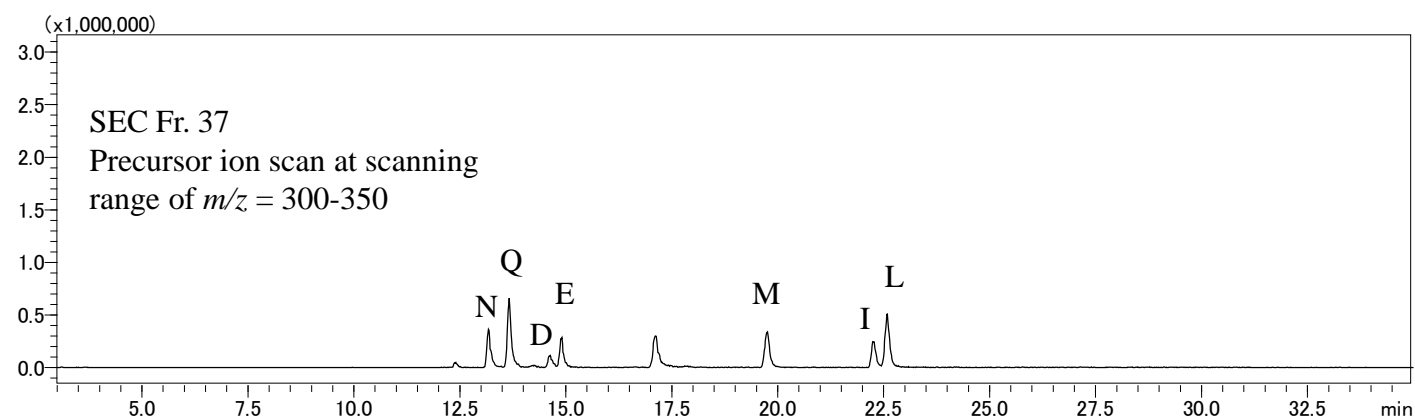
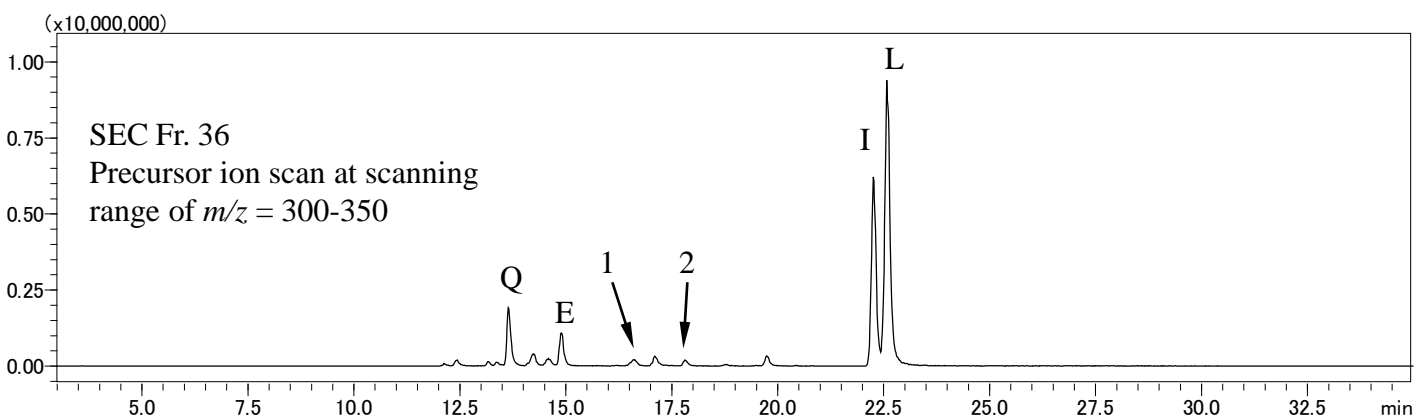
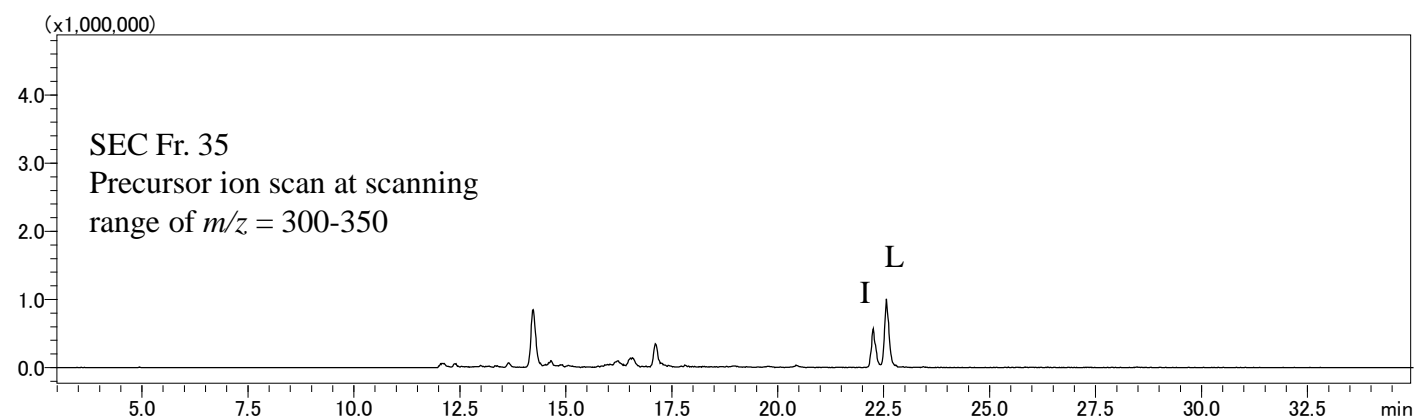
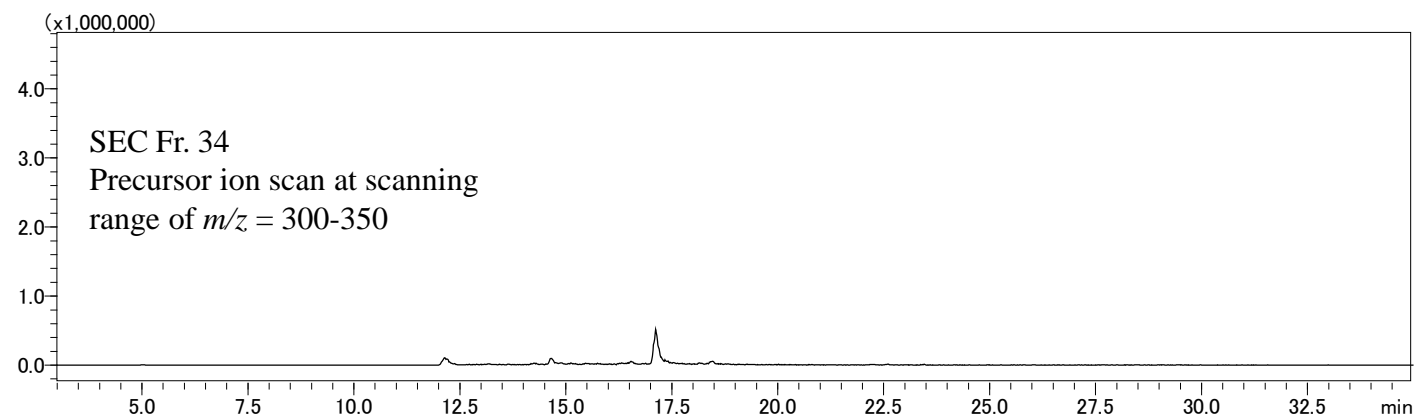


Figure S3.

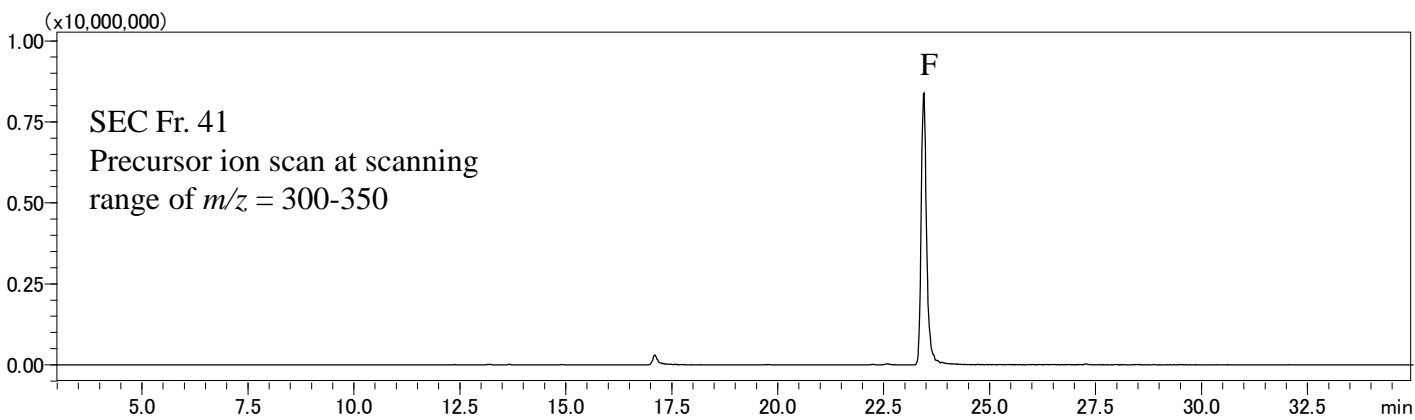
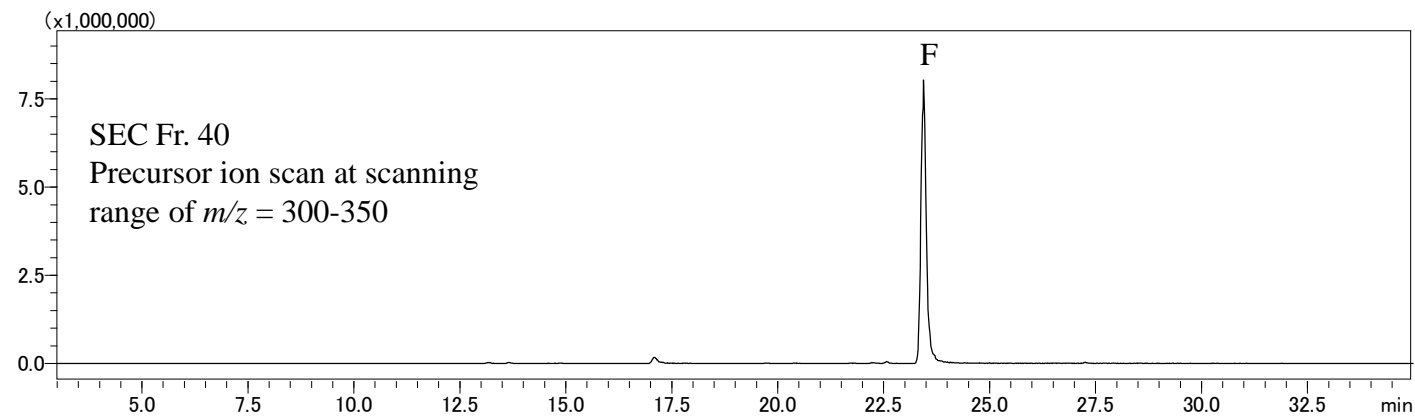
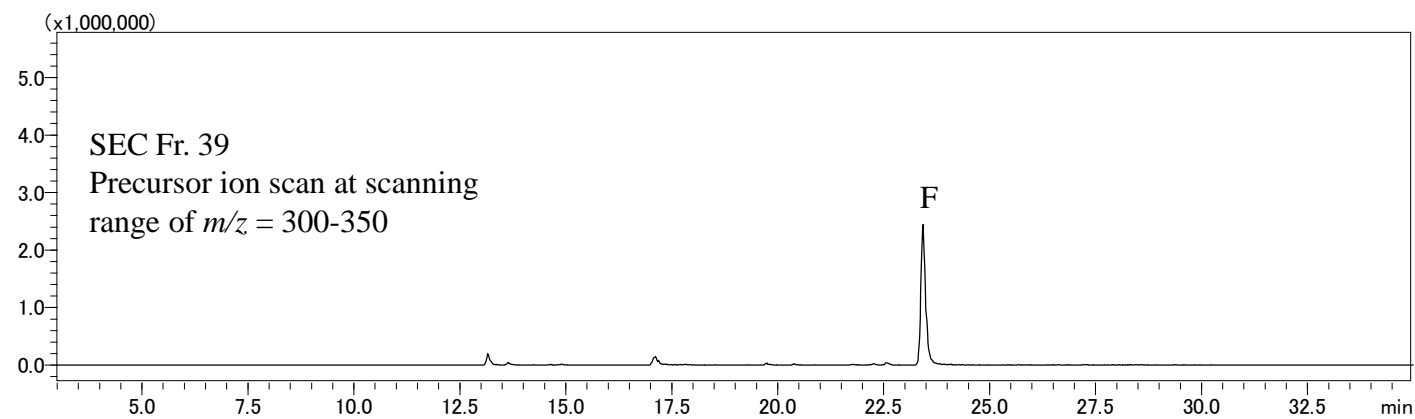
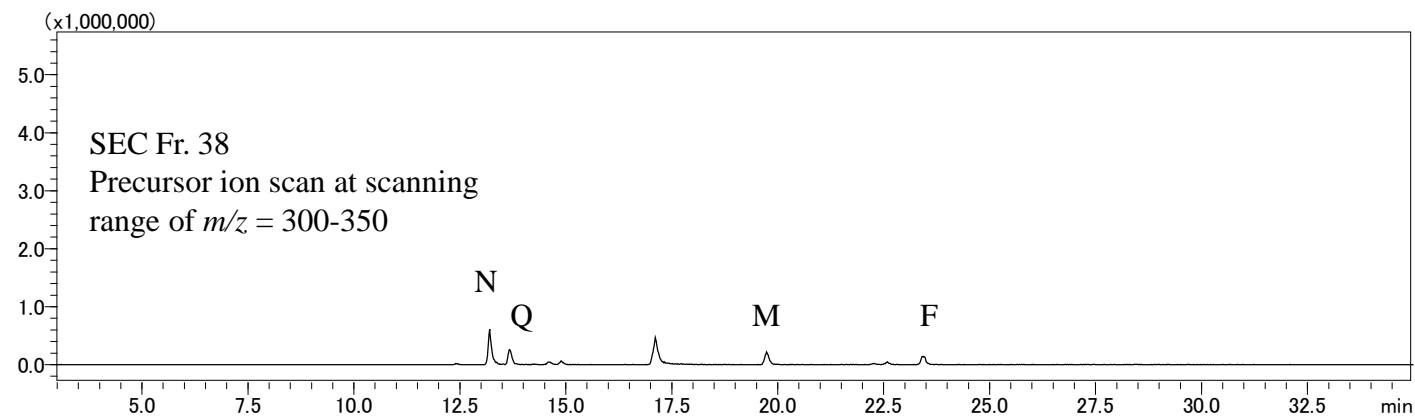


Figure S3.

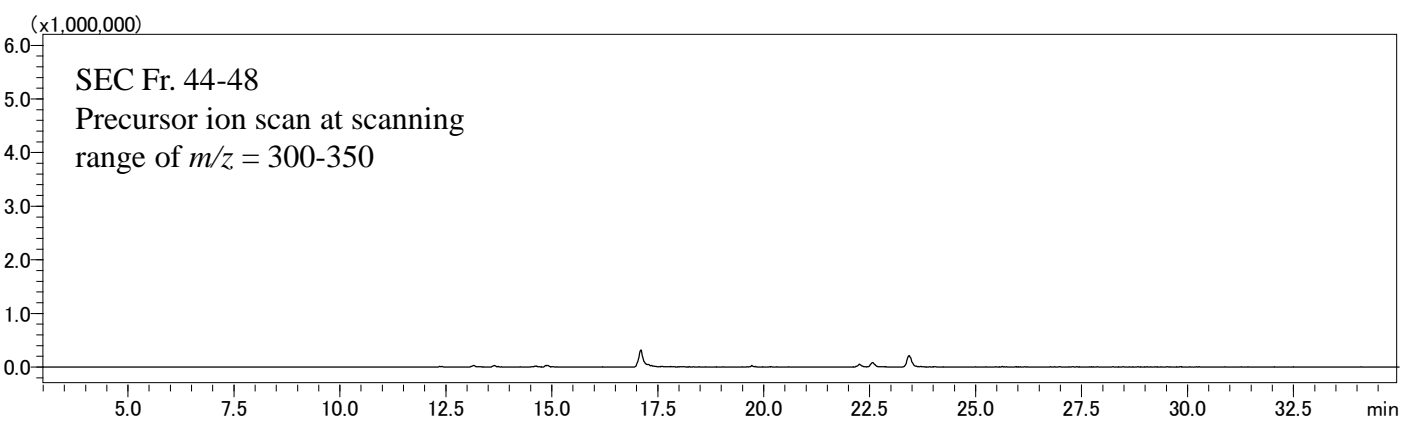
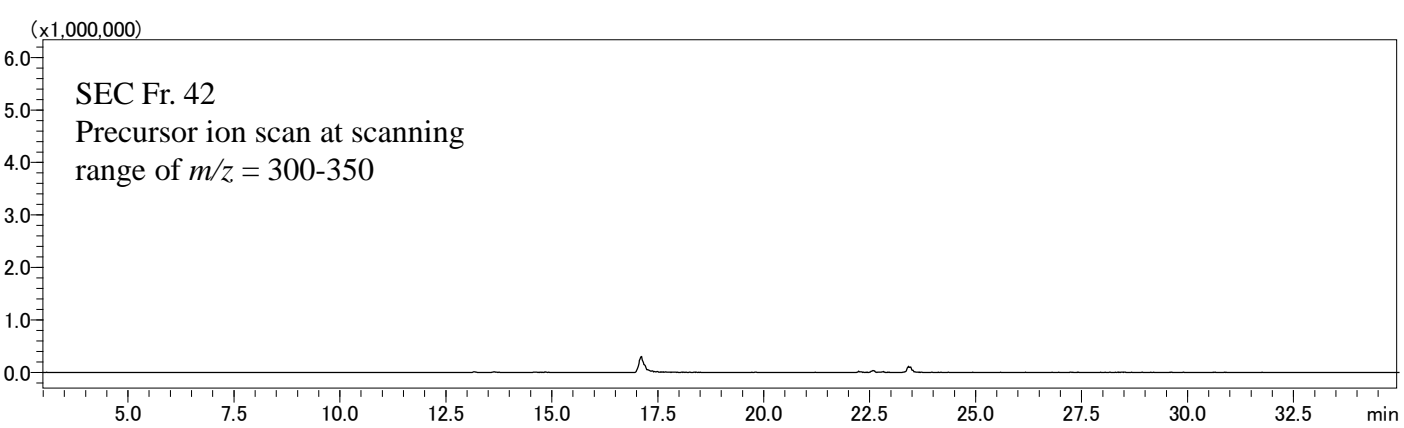
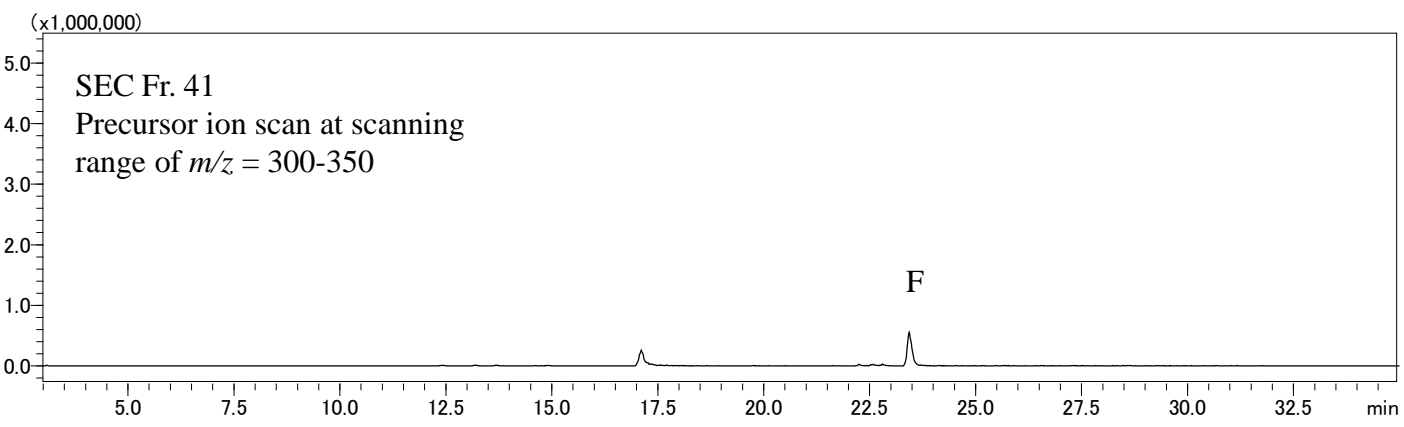


Figure S3.

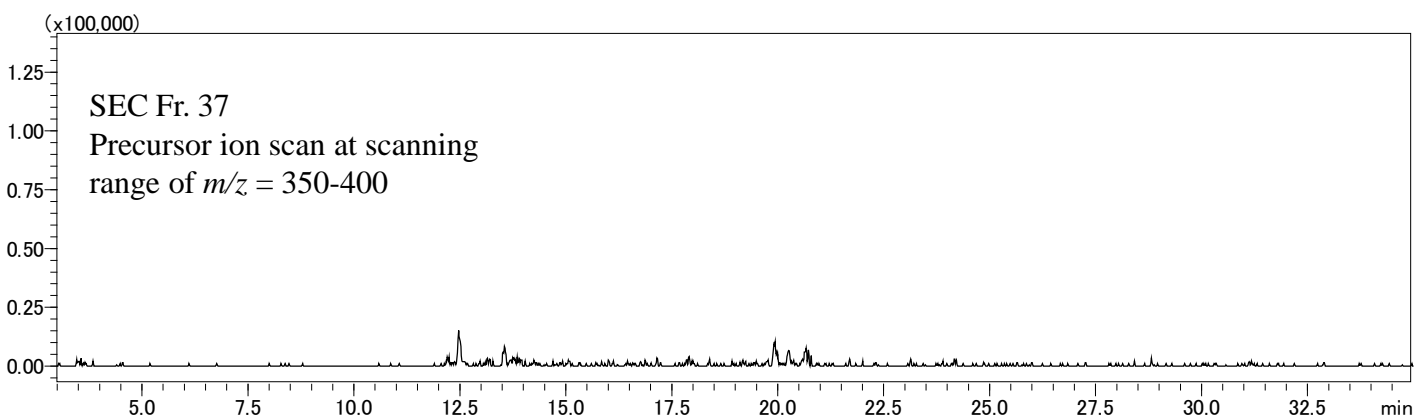
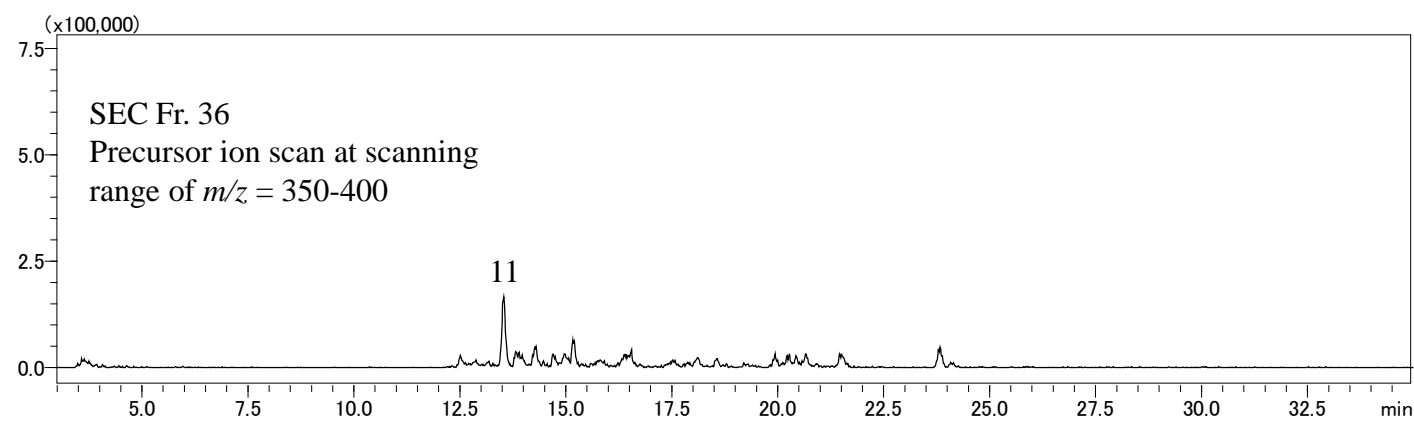
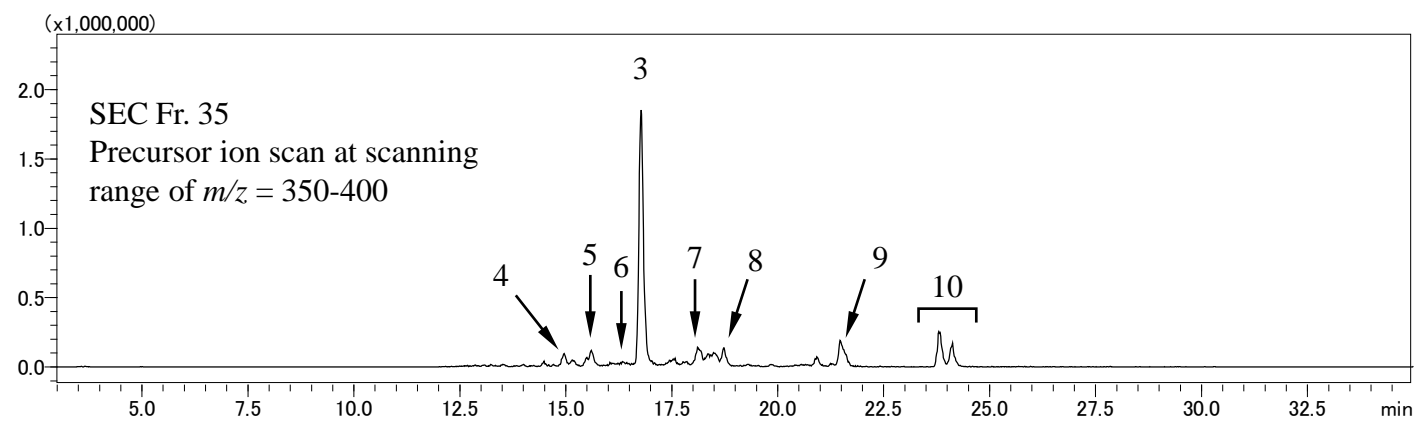
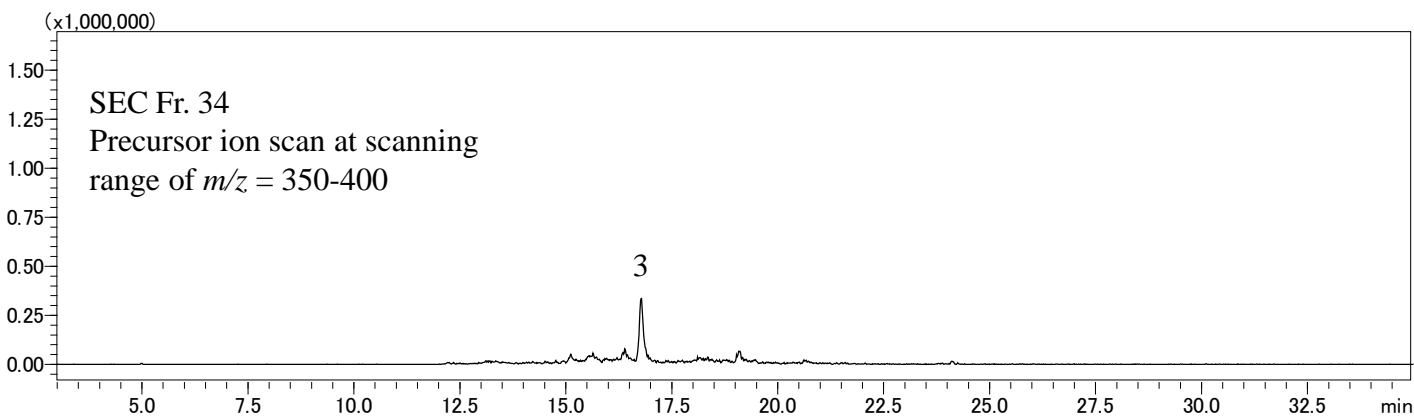


Figure S3.

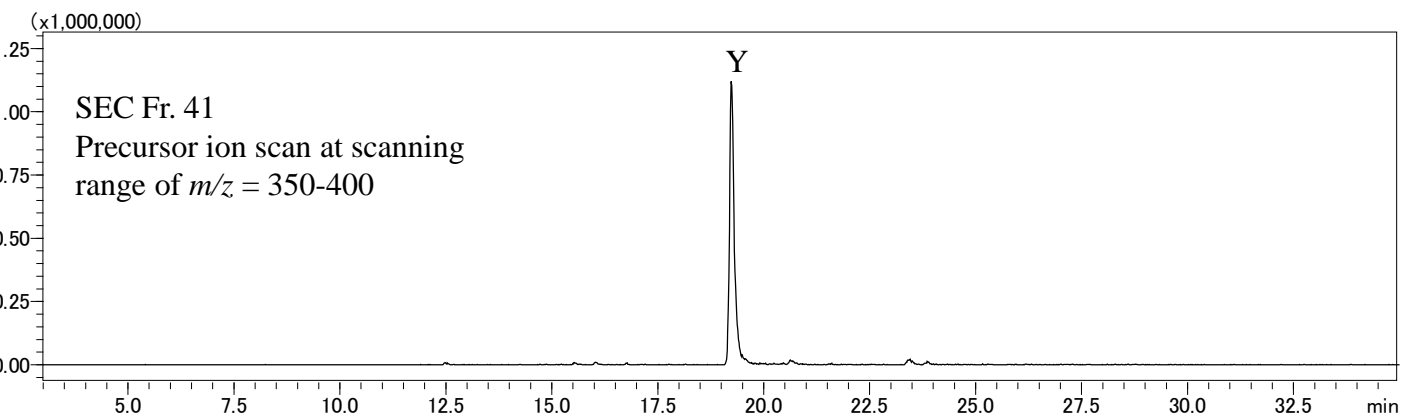
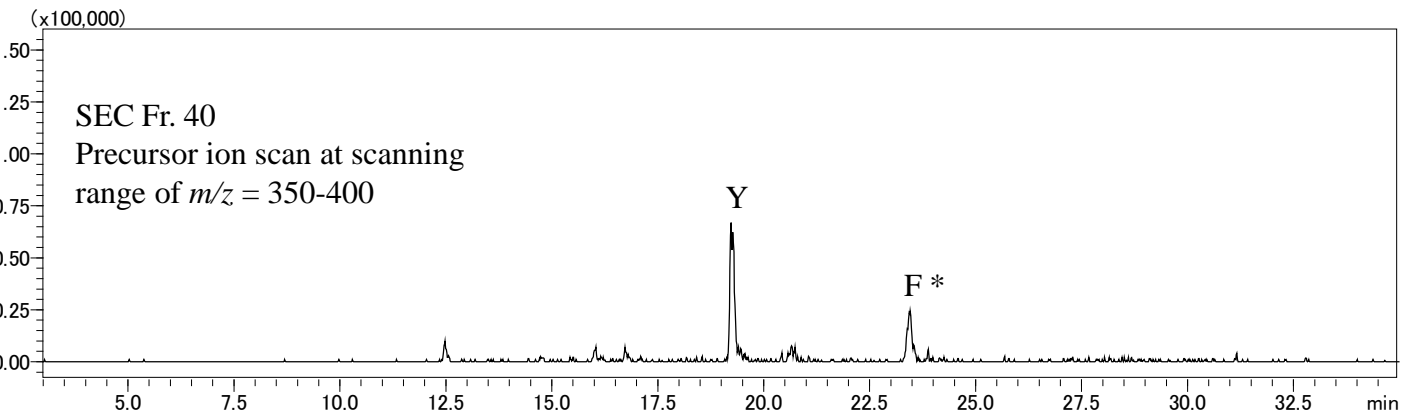
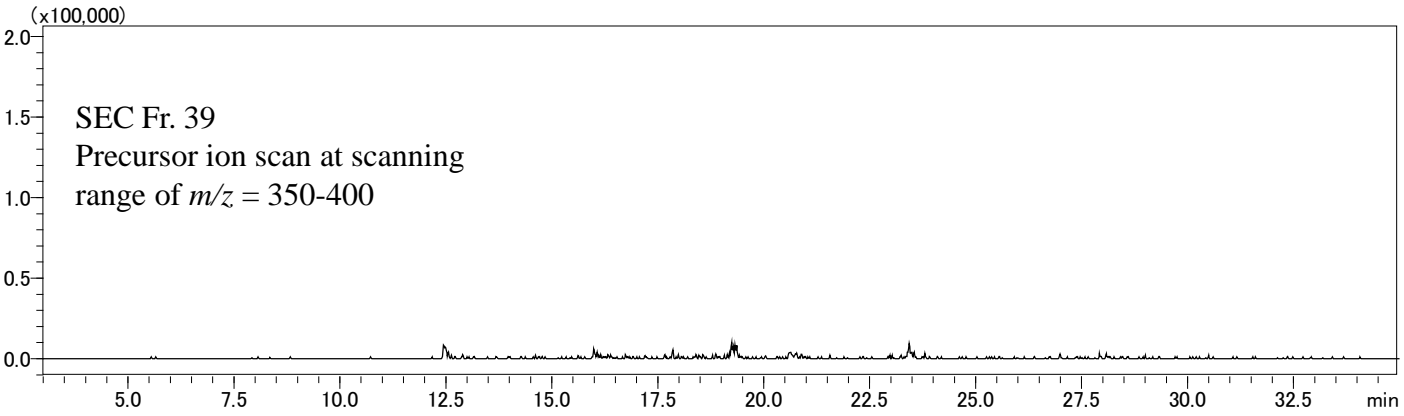
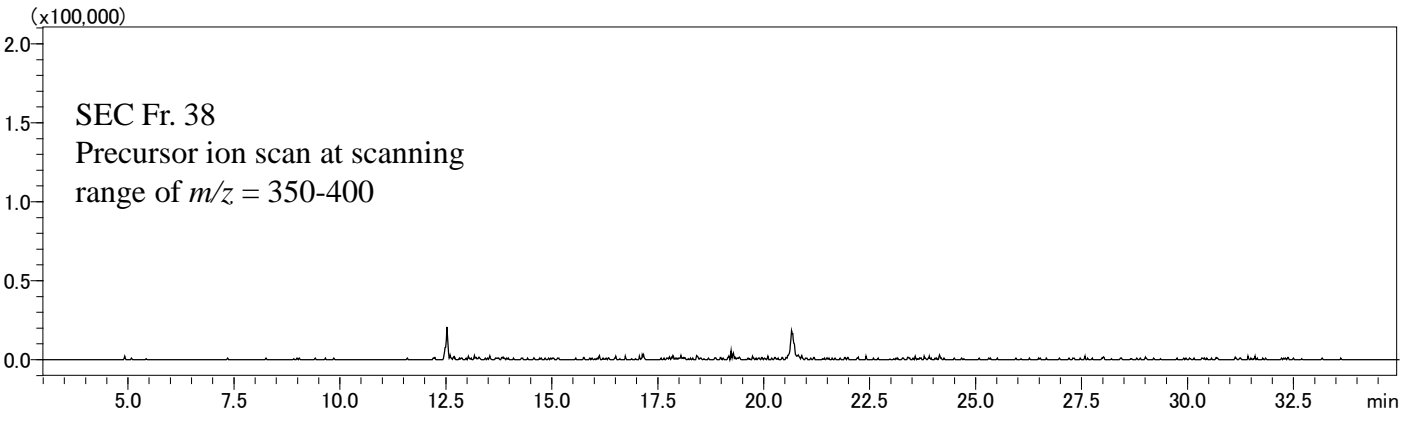


Figure S3.

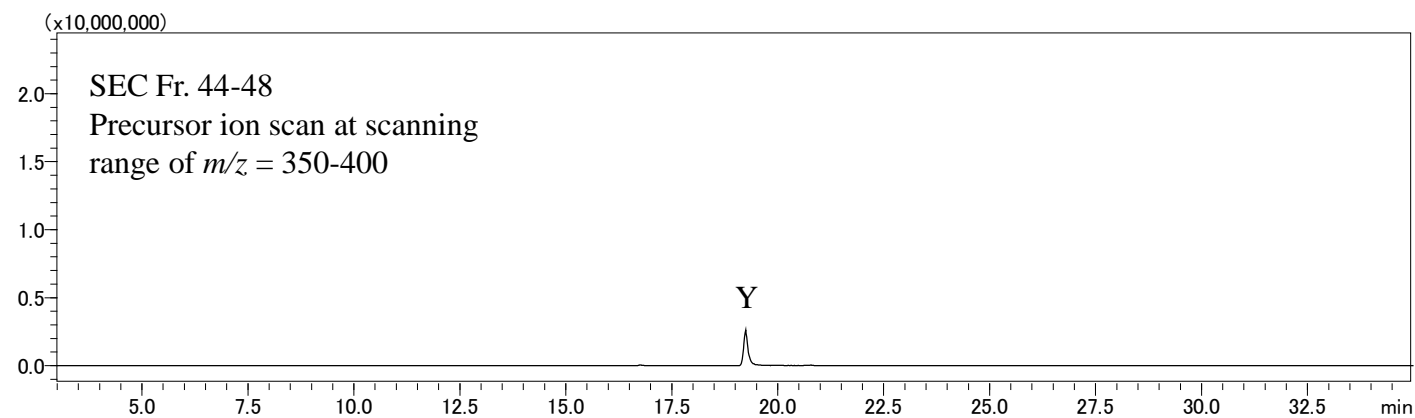
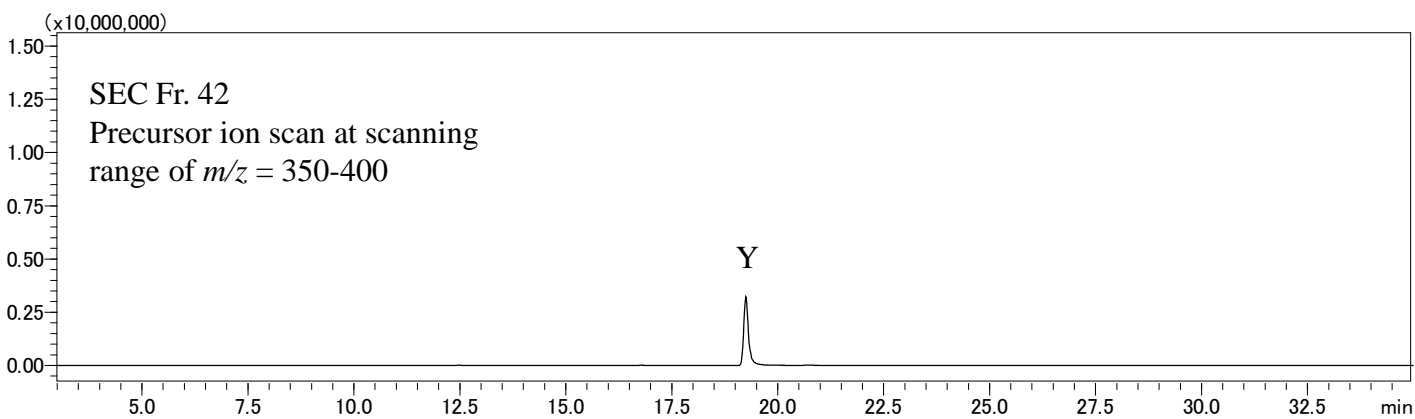
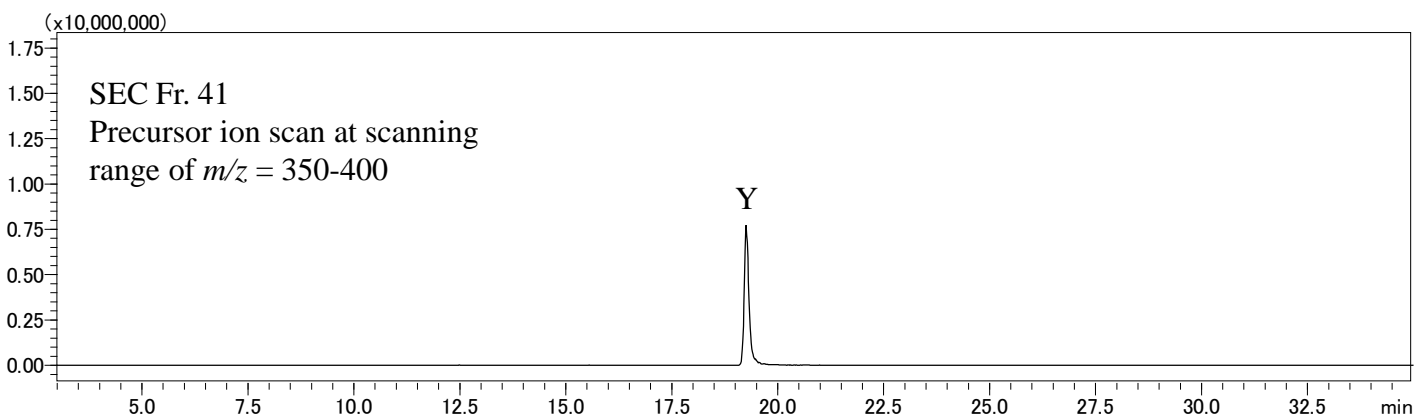


Figure S3.

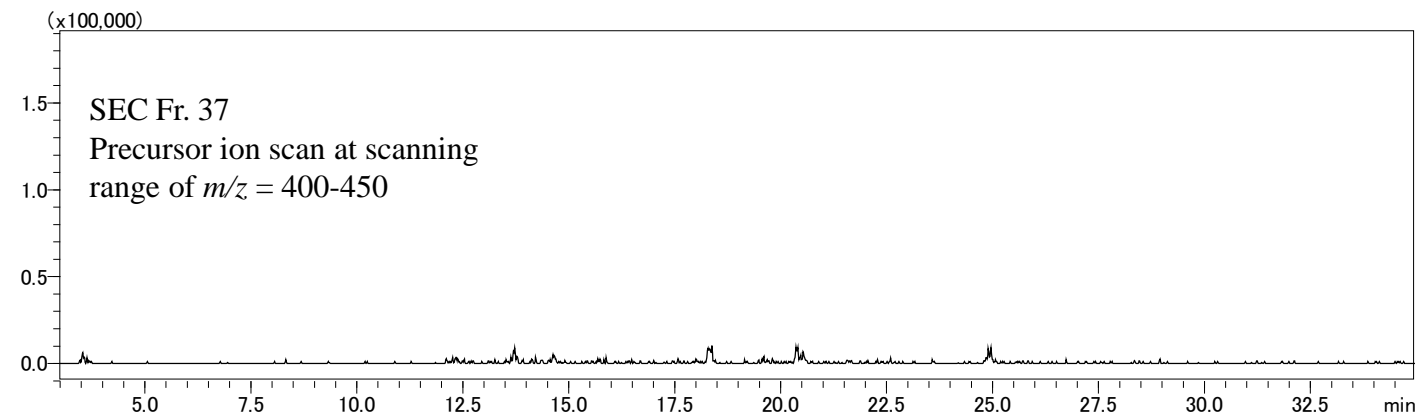
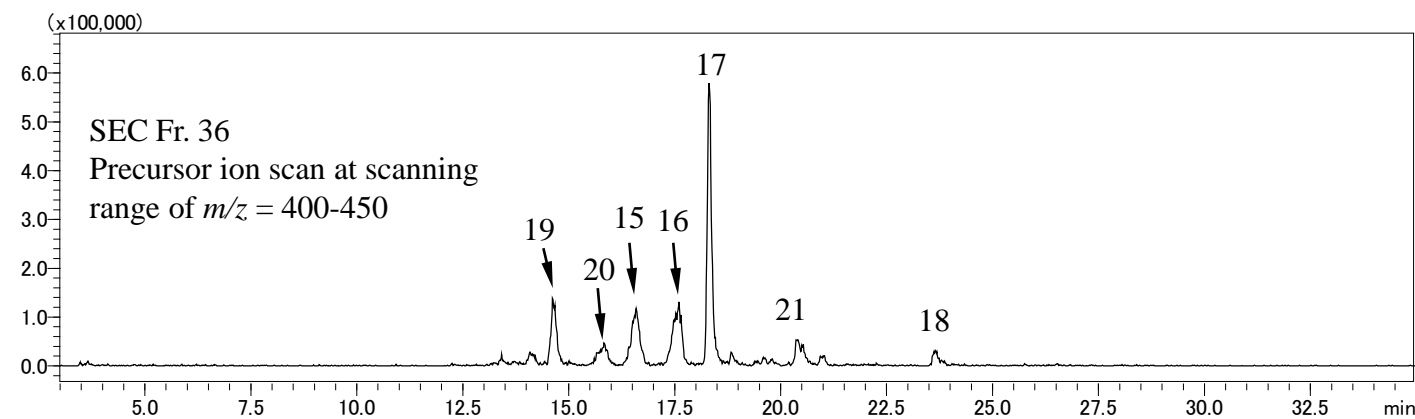
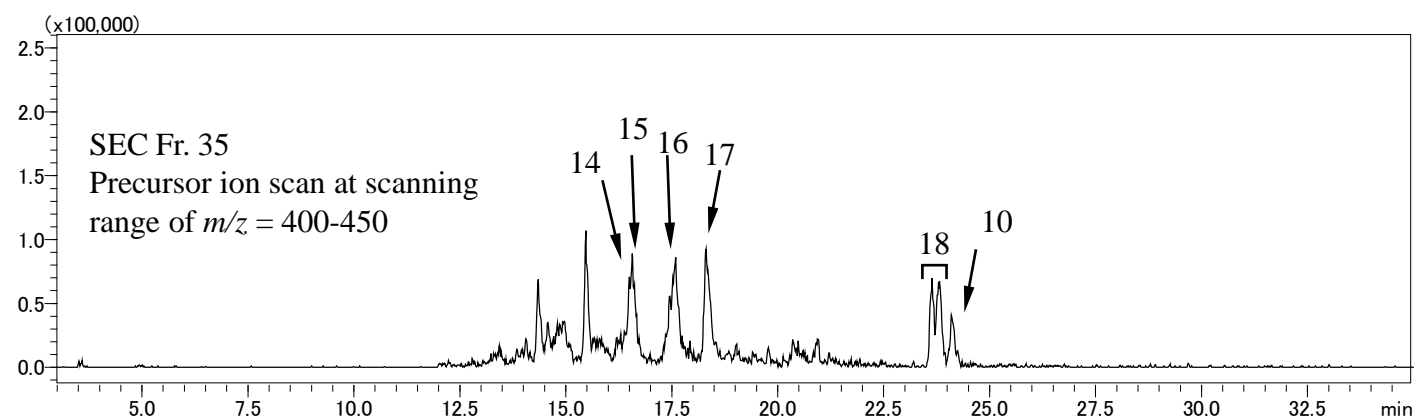
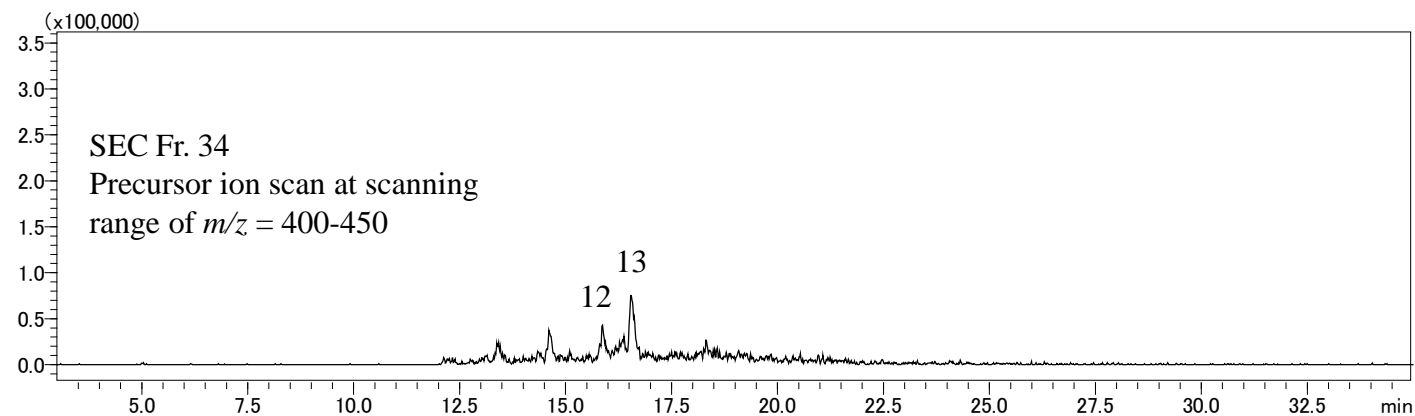


Figure S3.

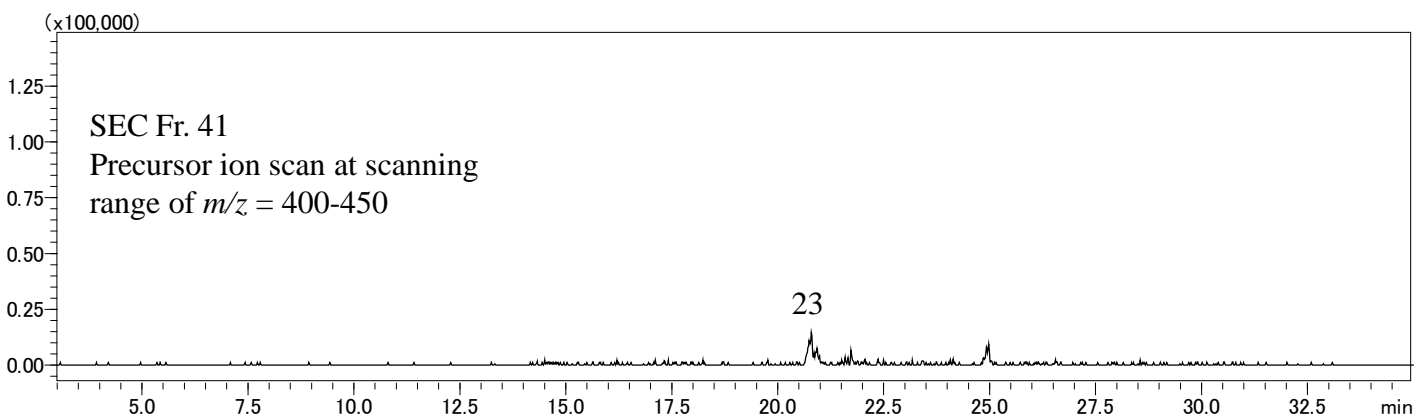
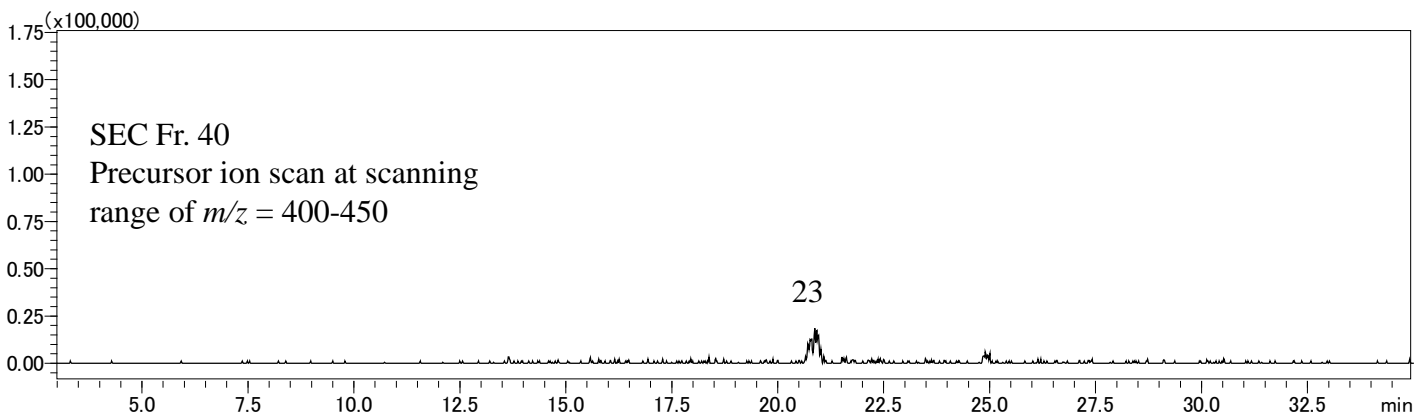
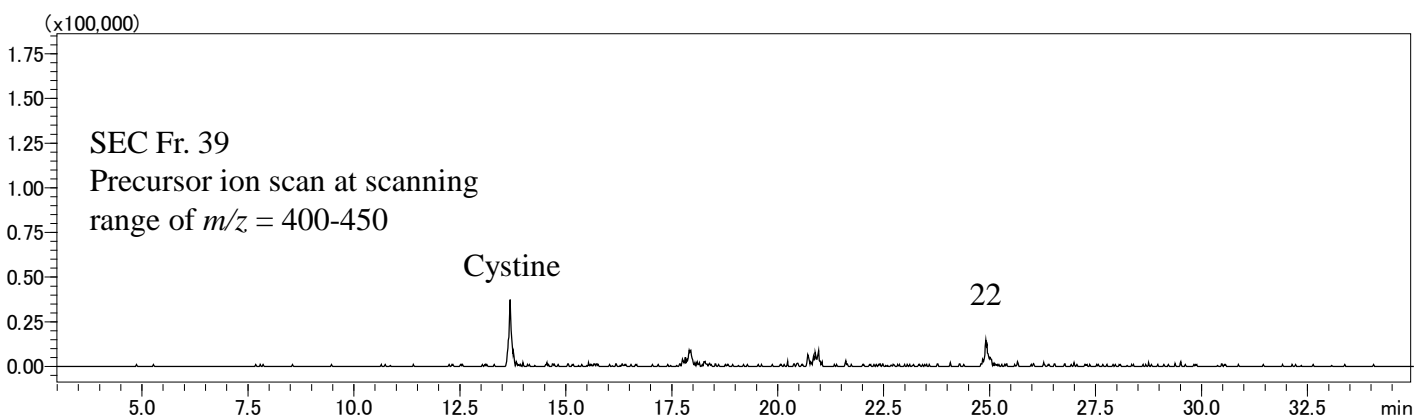
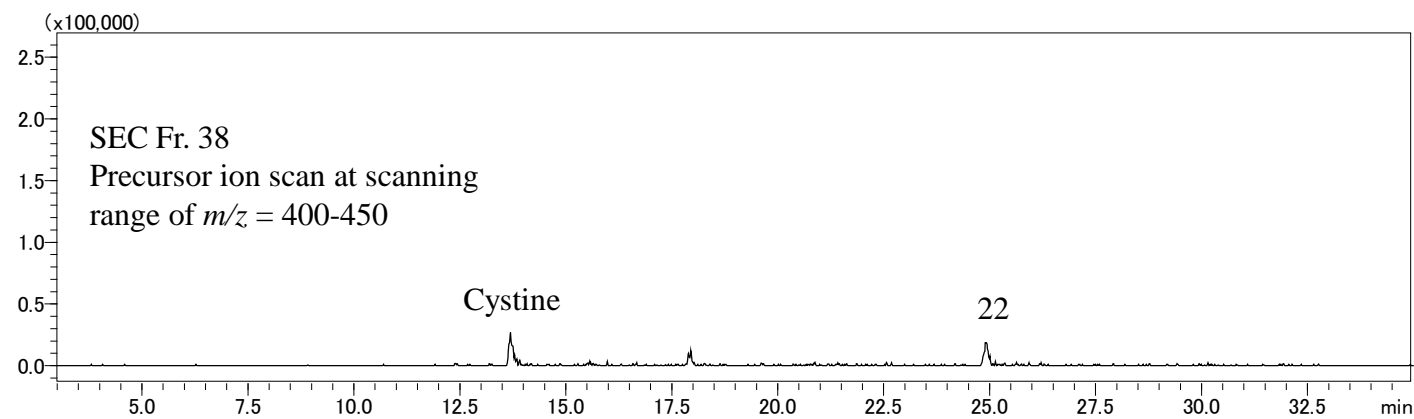


Figure S3.

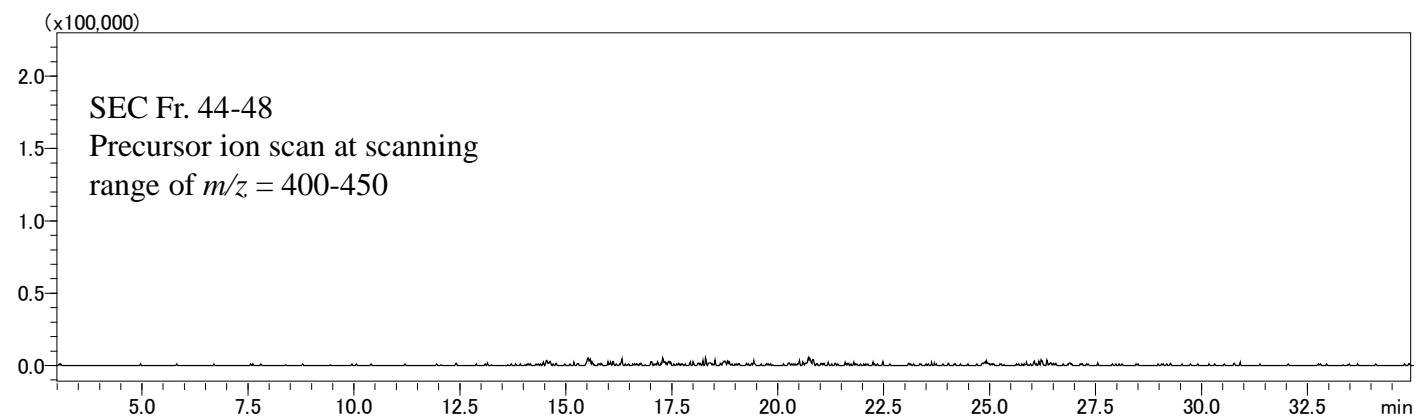
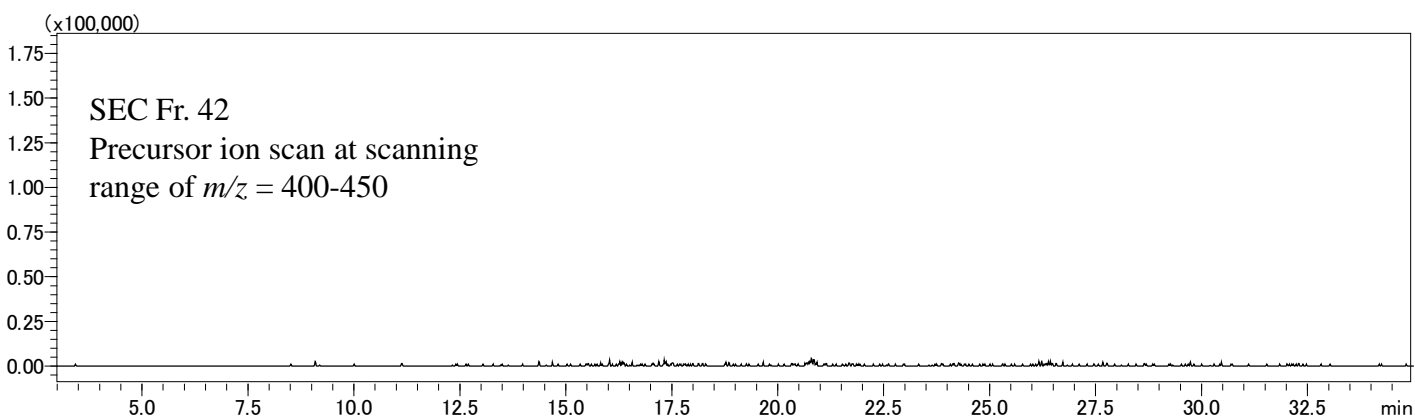
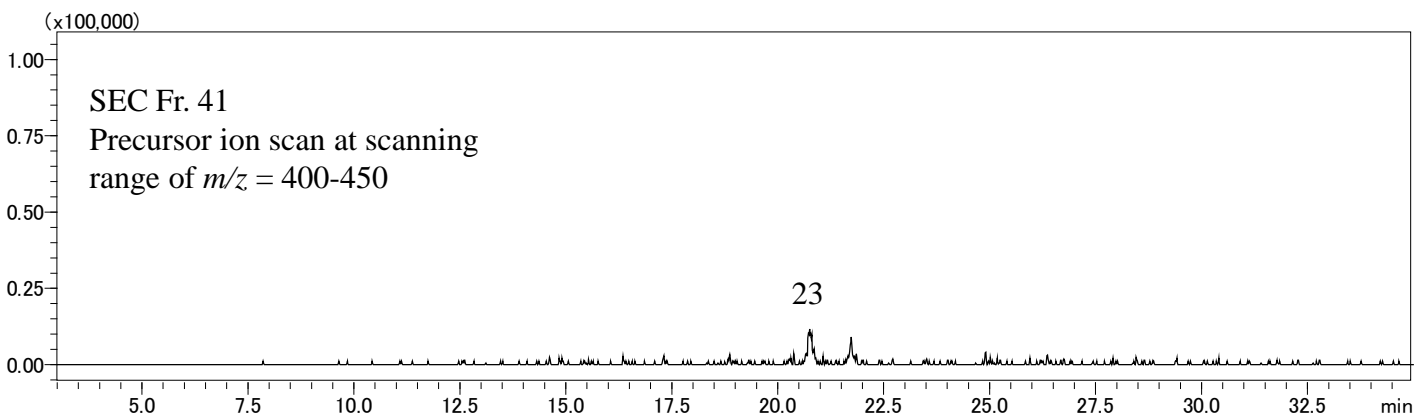


Figure S3.

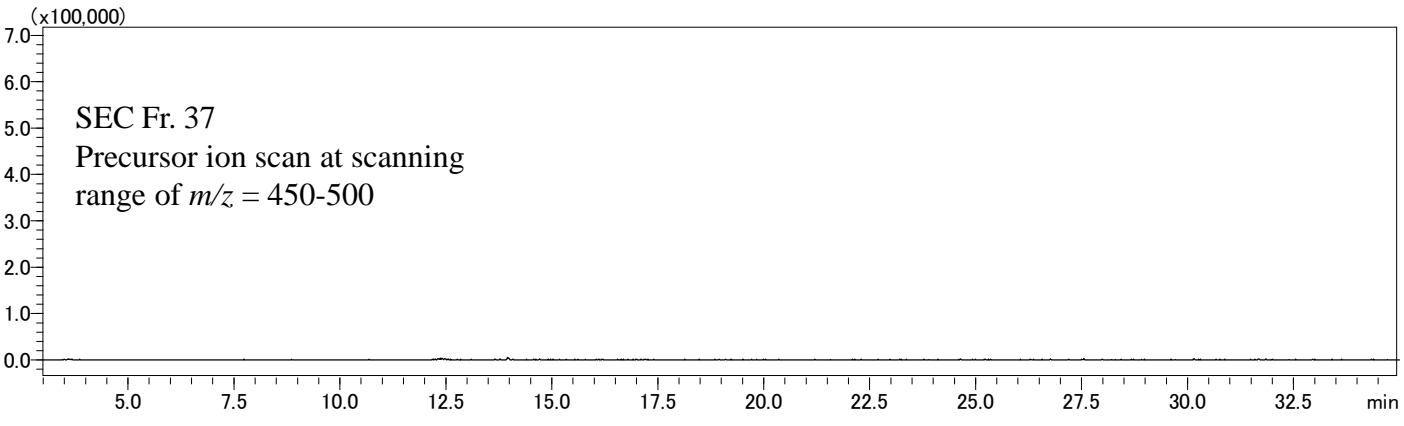
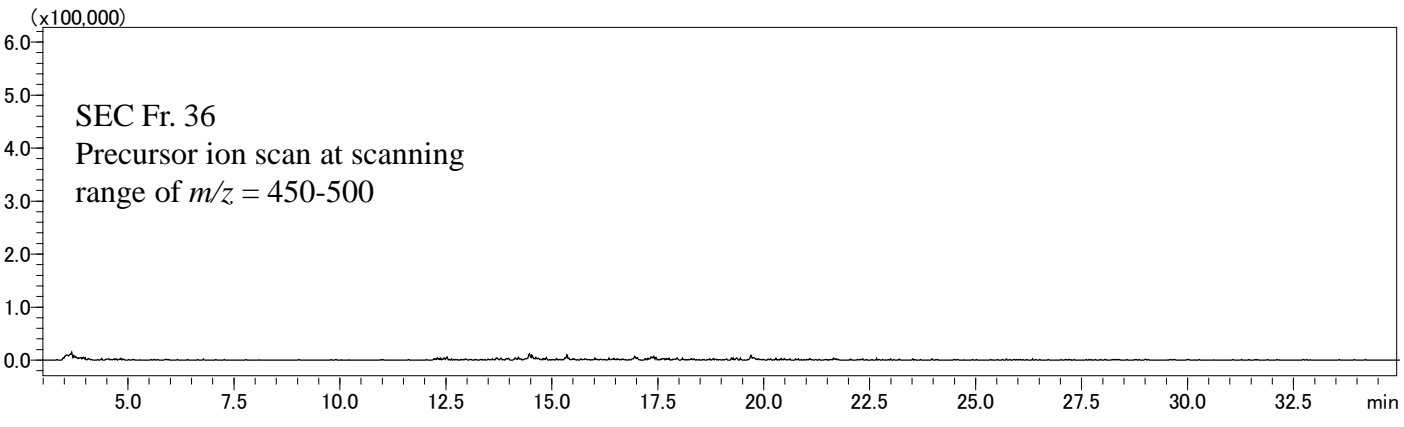
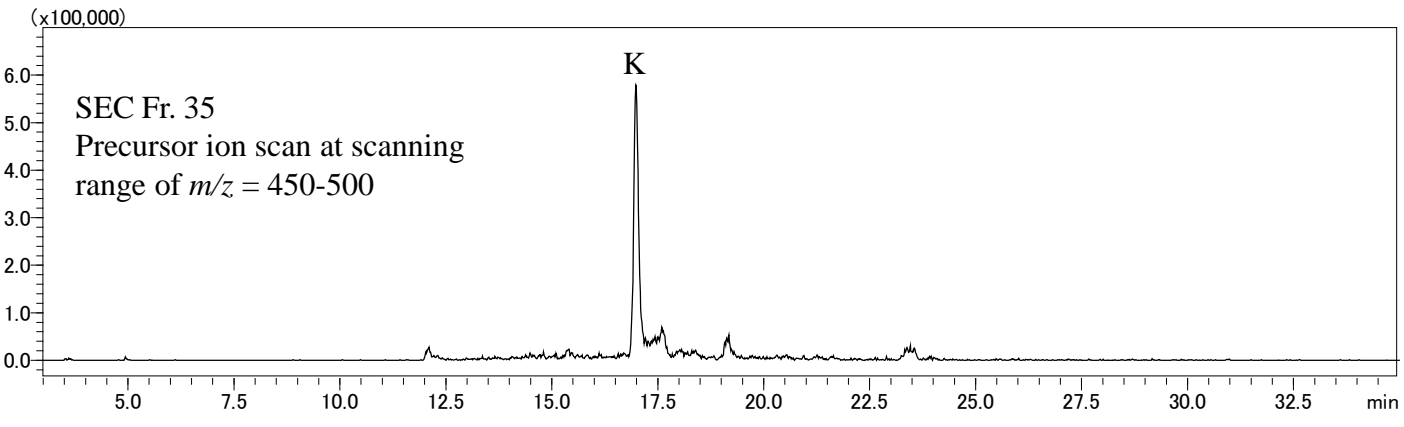
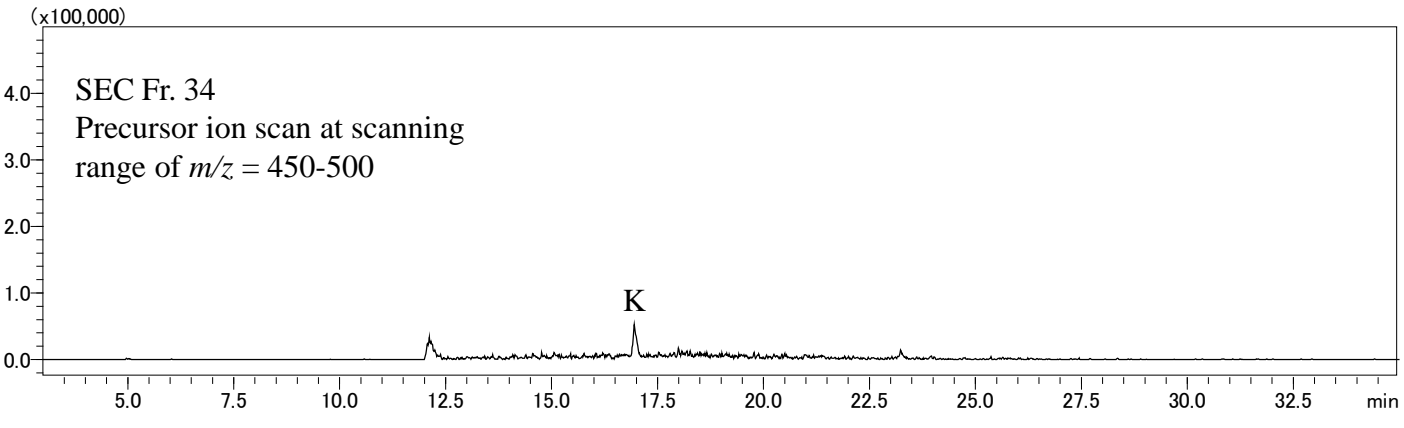


Figure S3.

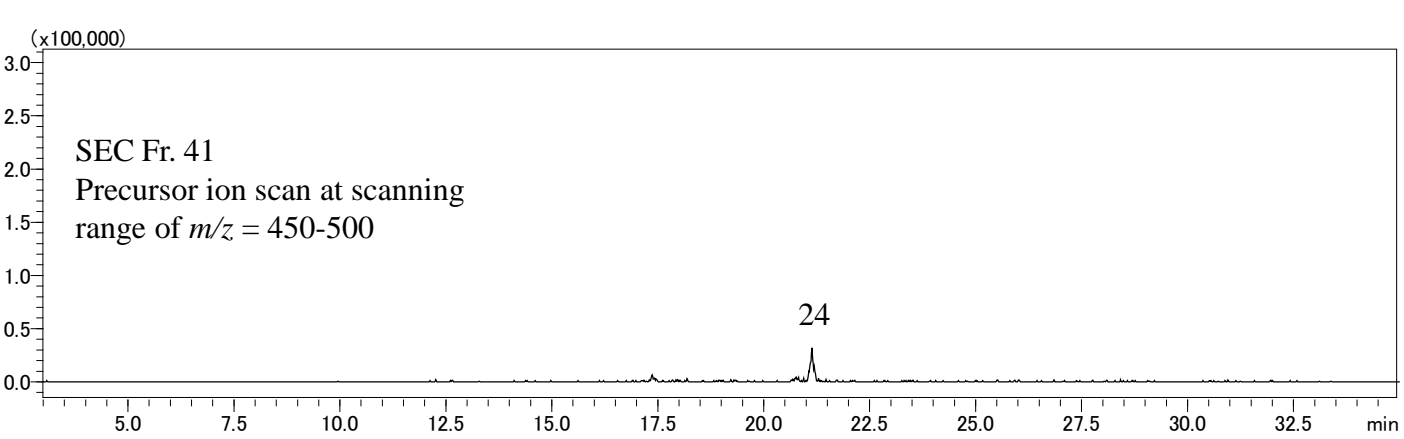
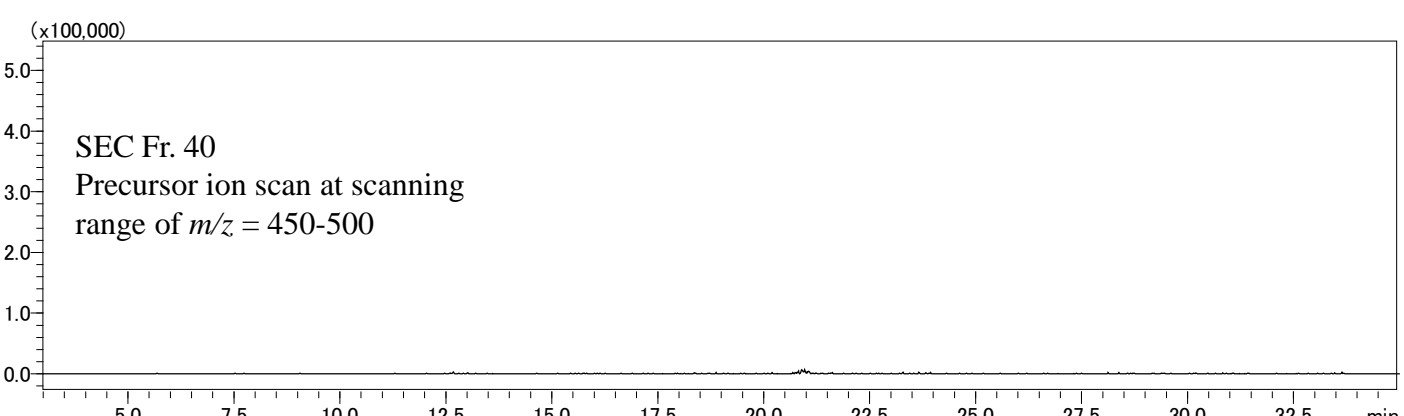
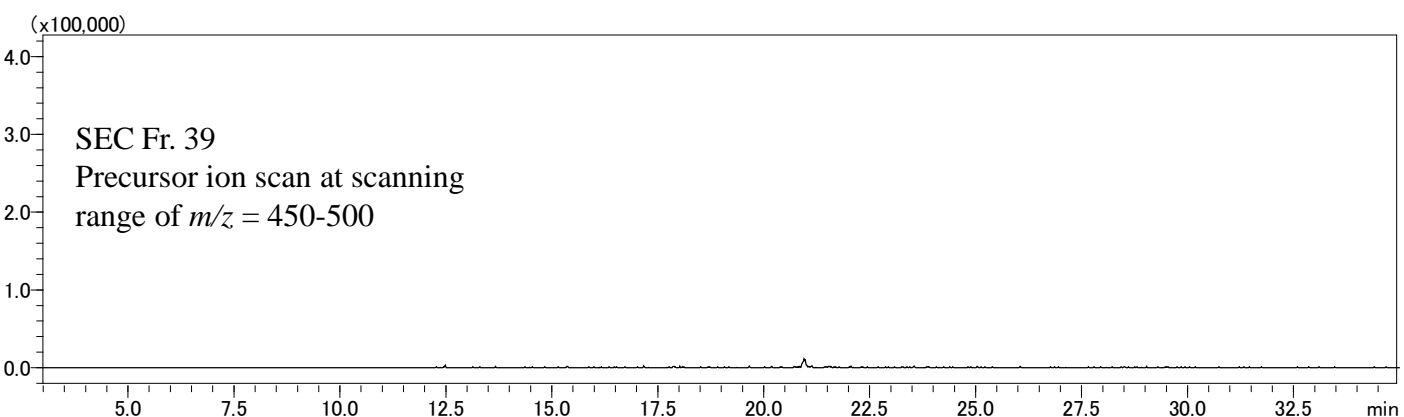
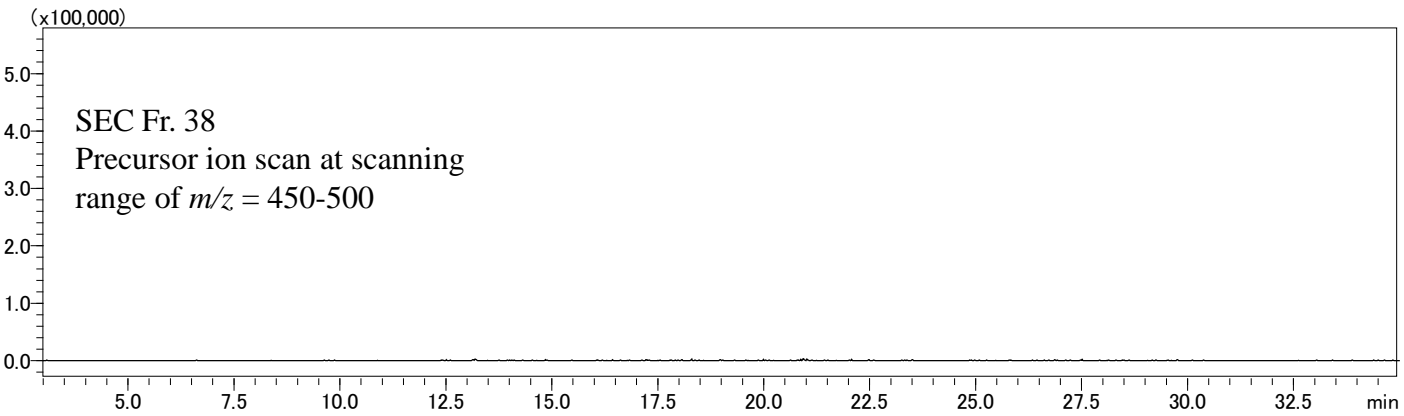


Figure S3.

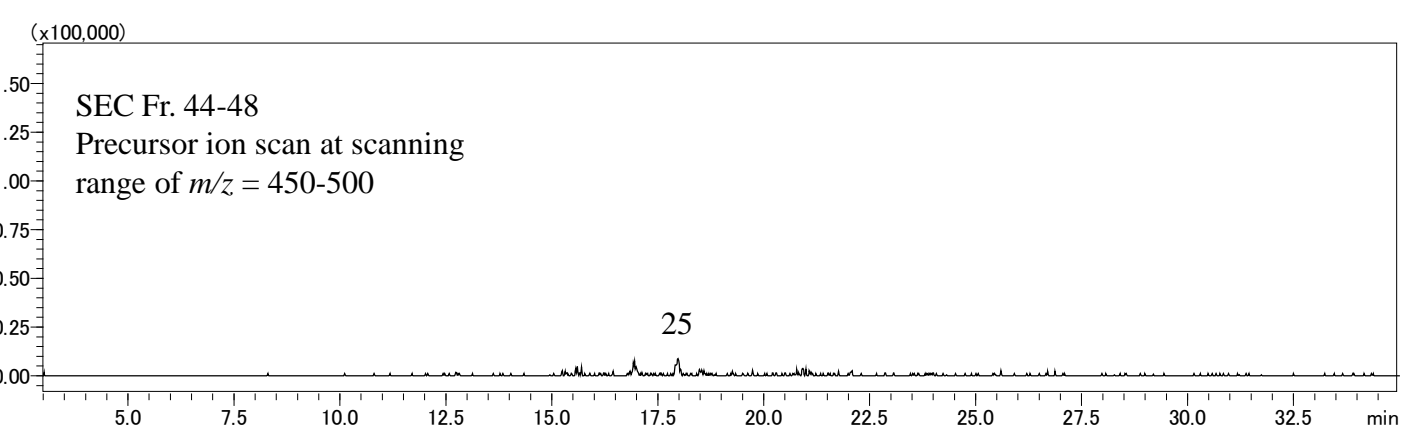
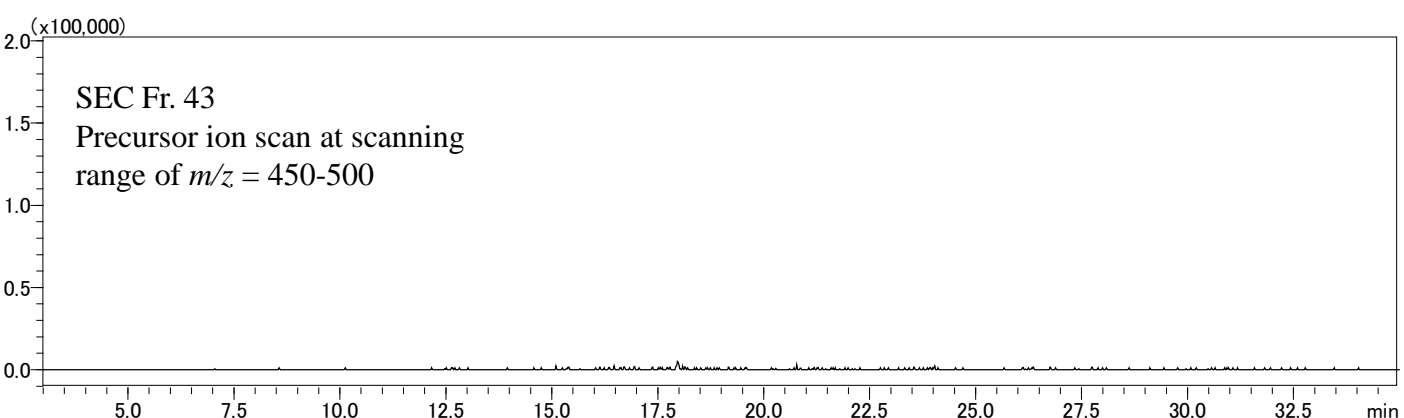
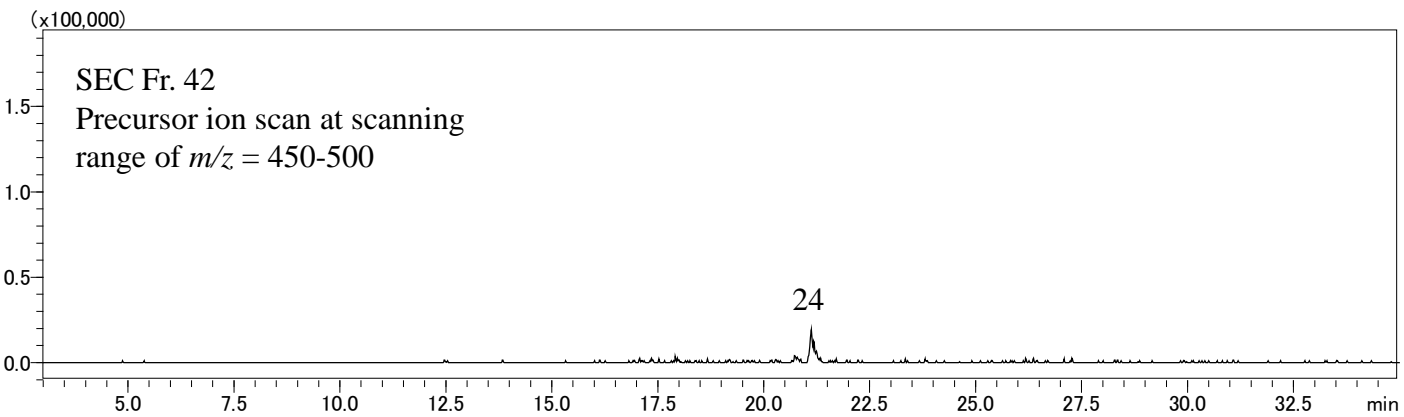


Figure S3.